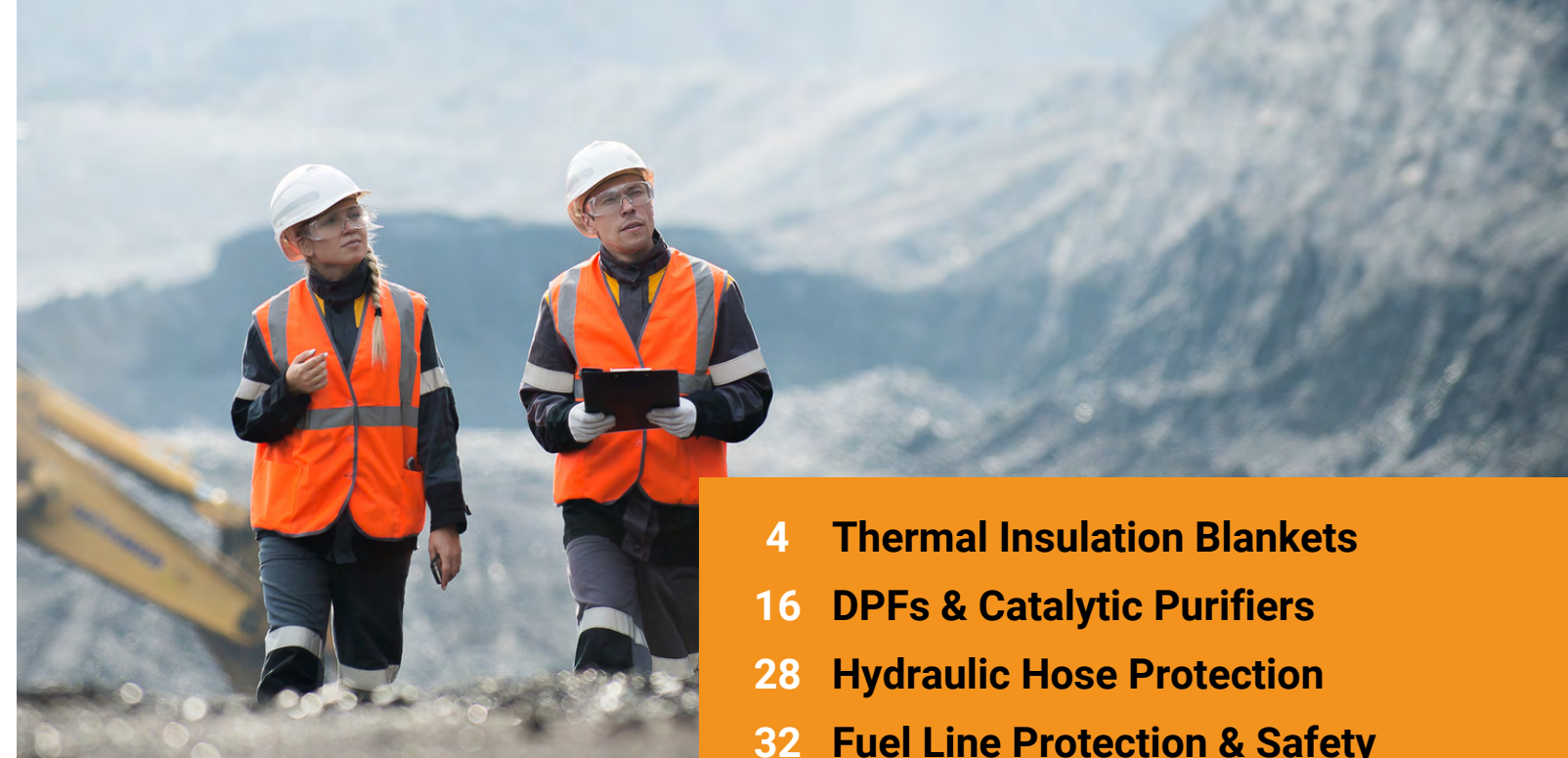


OUR STORY

MineBase was founded in 2018, derived from a company that had been working in the mining industry for decades with a focus on mobile plant.

That experience highlighted an increasing need for a deeper focus on safety within that area.

This became a catalyst to exploring different angles to improve the safety of machinery operators; the plant itself and those around them.



- 4 Thermal Insulation Blankets
- 16 DPFs & Catalytic Purifiers
- 28 Hydraulic Hose Protection
- 32 Fuel Line Protection & Safety
- 34 Fleet Fit-Out Service
- 36 Fire Safety Equipment
- 38 Mining Whip Flags
- 44 Fire Resistant Paint
- 45 First Aid Kits
- 46 Wheel Chocks
- 48 Radiator Caps
- 49 Reflective Tape
- 50 Seat Covers
- 51 Wheel Nut Indicators
- 52 Discrete Mine Residue Remover
- 56 Emergency Lighting
- 84 Worklamps
- 108 Reversing & Audible Safety
- 118 Battery Master Switches
- 124 Customised Mine Signage

MineBase strives for consistent innovation and expansion of safety and compliance solutions.

We are leaders in mobile equipment safety, making mines a safer place to work overall.

CONTENTS



THERMAL INSULATION BLANKETS

WHAT IS THERMAL INSULATION?

Thermal Insulation Blankets are made up of 3 key parts:

1. Hot Face

Aluminium Coated Silica Glass: The use of Aluminium coated silica glass rather than the traditionally used mesh has proven successful in five key areas;

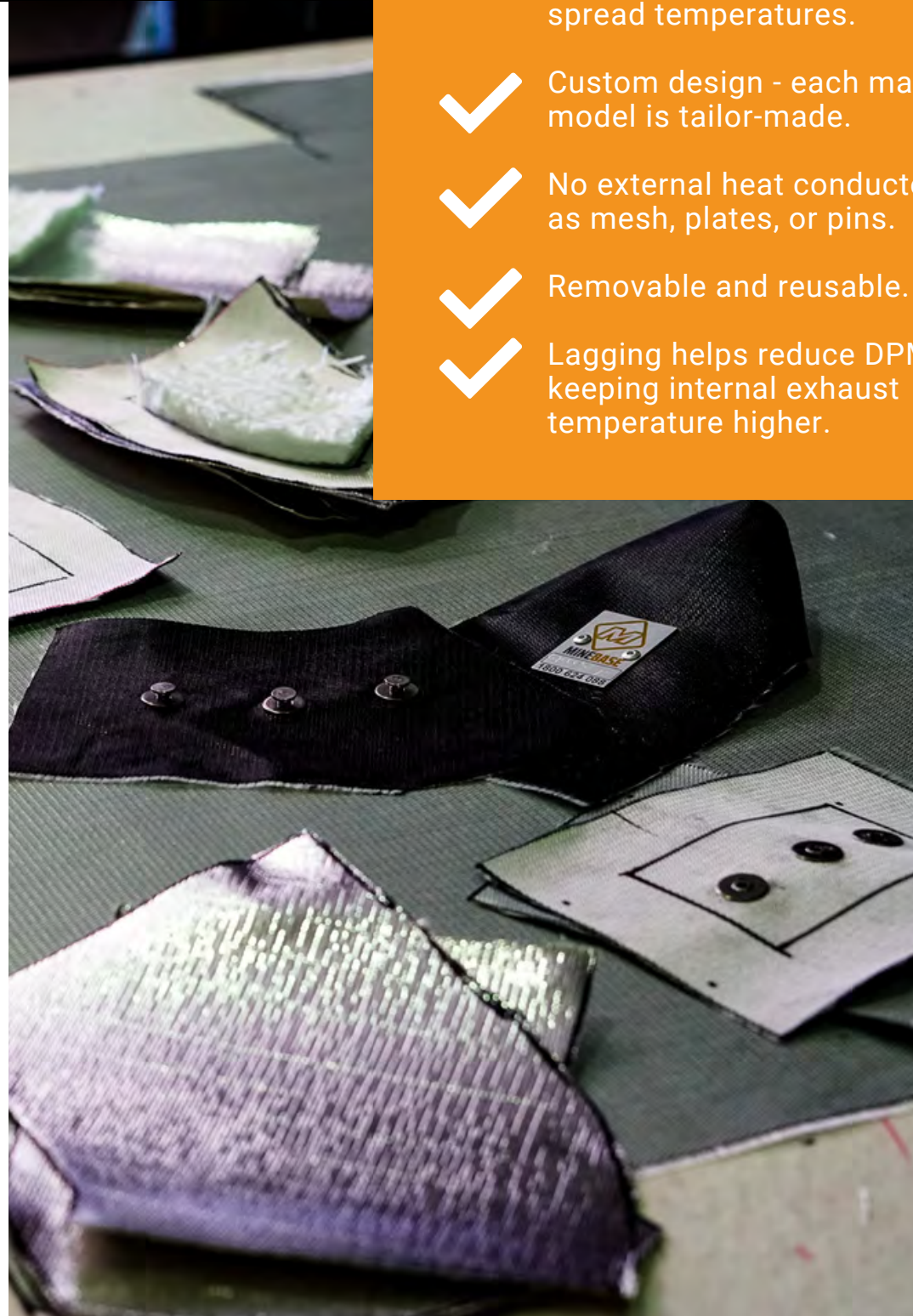
1. Does not transfer heat in the same way mesh would.
2. Heat is reflected keeping the outer layer cooler.
3. Non-permeable aluminium material prevents absorption of flammable liquids that would otherwise become a potential point of combustion.
4. Allows better fitment of the blanket.
5. Reduces the risk of creating a power short or conduction point.

2. Insulating Layer

The needle mat layer is made from silica glass needle felt which not only has better thermal properties than the commonly used fibreglass needle mat; it is also a lot less irritating to the skin, making it easier to work with when fitting.

3. Cold Face

The outer layer is known as the "Cold Face", which consists of a fibreglass cloth that can be coated in a variety of different materials such as Silicone, Aluminium or Teflon. Silicone coating is most popular on mobile underground plant, as it is non-absorbent, repels oils and other flammable liquids that may cause a fire.

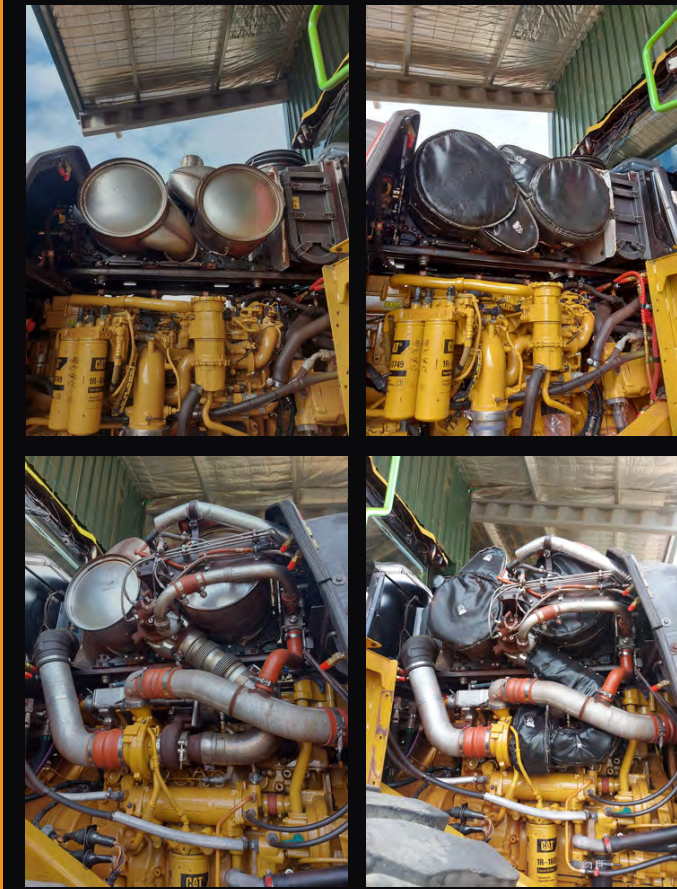


BENEFITS OF THERMAL INSULATION BLANKETS:

- ✓ Eliminations ignition points.
- ✓ Increased safety for operators by reducing hot surfaces.
- ✓ Extends life expectancy of exhaust components due to more evenly spread temperatures.
- ✓ Custom design - each machine model is tailor-made.
- ✓ No external heat conductors such as mesh, plates, or pins.
- ✓ Removable and reusable.
- ✓ Lagging helps reduce DPM by keeping internal exhaust temperature higher.

Before

After



BENEFITS OF USING ALUMINIUM-COATED SILICA GLASS MATERIAL ON THE HOT FACE:

- ✓ There is no heat transfer of the mesh.
- ✓ The aluminium coating reflects heat on the hot face keeping the outer layer cooler. This has been proven in thermal testing.
- ✓ This helps seal the blanket, making it less likely to absorb oils or flammable fluid on the inner surface.
- ✓ It makes for better installation/fitting of the blanket.

WHAT OUR CUSTOMERS SAY



Testimony Andrew Ison - Awcon

We buy our Thermal Insulation Blankets from MineBase because their pricing and quality are second to none.

They do site visits to measure up our equipment for Lagging which saves us a lot of time and effort. Other places make you measure it up yourself!

The quality of the Lagging is highly regarded by our clients with the risk of a fire reduced. We can safely operate our equipment with added peace of mind.

The order process with MineBase is very easy and straight forward and the guys are a pleasure to deal with. I highly recommend them!



Case Study

We have worked closely with a Mine Site in NSW that had issues with fires underground due to exhaust insulation not being sufficient to their needs.

This particular site was reporting in excess of 4 incidents per year in the beginning.

Since MineBase has been involved there have been no reportable incidents directly relating to fires started underground from Lagging not being to standard.

MineBase continues to do quarterly auditing and maintenance on all insulation products and continuous QA measures are put in place to ensure the standard has been kept to a maximum.

SOME BRANDS WE CATER FOR:

- CAT
- KOMATSU
- ELPHINSTONE
- NORMET
- DOOSAN
- SANDVIK
- VOLVO
- HITACHI
- ATLAS COPCO
- JACON EQUIPMENT

We can cater for every brand of heavy-duty machinery. Contact us to see how we can help you and your fleet.



FAQS

How long will Lagging last on the machine?

It depends on what conditions or environment the machines are working in. e.g., underground mining where machines need to be washed down in constant sunlight etc. However, we have had machines in these particular conditions with Lagging still in perfect working order for over 4 years. Exhaust leaks will shorten lifespan.

Can you supply Insulation for all types of machines?

Yes we can! We keep a very large library of designs on hand and have the capabilities of measuring all types of equipment to suit your needs.

Why do I need to install Thermal Insulation on my machine?

Not only does Thermal Insulation protect operators and fitters from exposure to high temps but it also reduces temperatures in high-risk areas, such as engine bays in close proximity to fuel and oil lines. Our Insulation has an outer layer that repels any flammable liquids from reaching ignition points. e.g. when a fuel/hydraulic line bursts and sprays onto a turbo or manifold which is particularly dangerous in an underground mine.

What is your lead time?

Our average lead time from measure to installation is 4 working days. Machines that we have already measured generally take 48 hours. This depends on the location, workload and machine components required.

Does Insulation overheat or damage turbos or other components?

No, our Insulation uses silica glass, which unlike fibreglass; when installed correctly by one of our trained technicians, keeps turbos and other exhaust components at an even temperature for more regular periods, which has been proven to increase their longevity.

Do you install your Thermal Insulation Blankets?

Yes! We prefer to install as we are trained in this field and have the right tools for the job. This allows us to ensure there are no corners cut with our own in-house Q.A. process.



STUDS AND STITCHING

Reason behind Studs

Studs are the preferred fastening method used by MineBase over clips and springs as the stud method is only attached to the outer layer of the insulation, unlike the clips and springs method which comes into direct contact with the hot surface. This then becomes a conductor of heat to the outer edge of the clip.

Reason behind Stitching

The stitching is essential for holding all the vital layers of insulation together.

Whilst designing and stitching, care is taken to only stitch as much as necessary to maintain a balance between quality and safety. To do this, we avoid excess stitching which creates perforations and therefore absorption points.

It is also stitched using the inside-out stitching method to minimise seepage points and heat transfer.

In addition, our stitching is stainless-infused kevlar for the strongest possible cohesion.

PRODUCT TESTING - HEAT

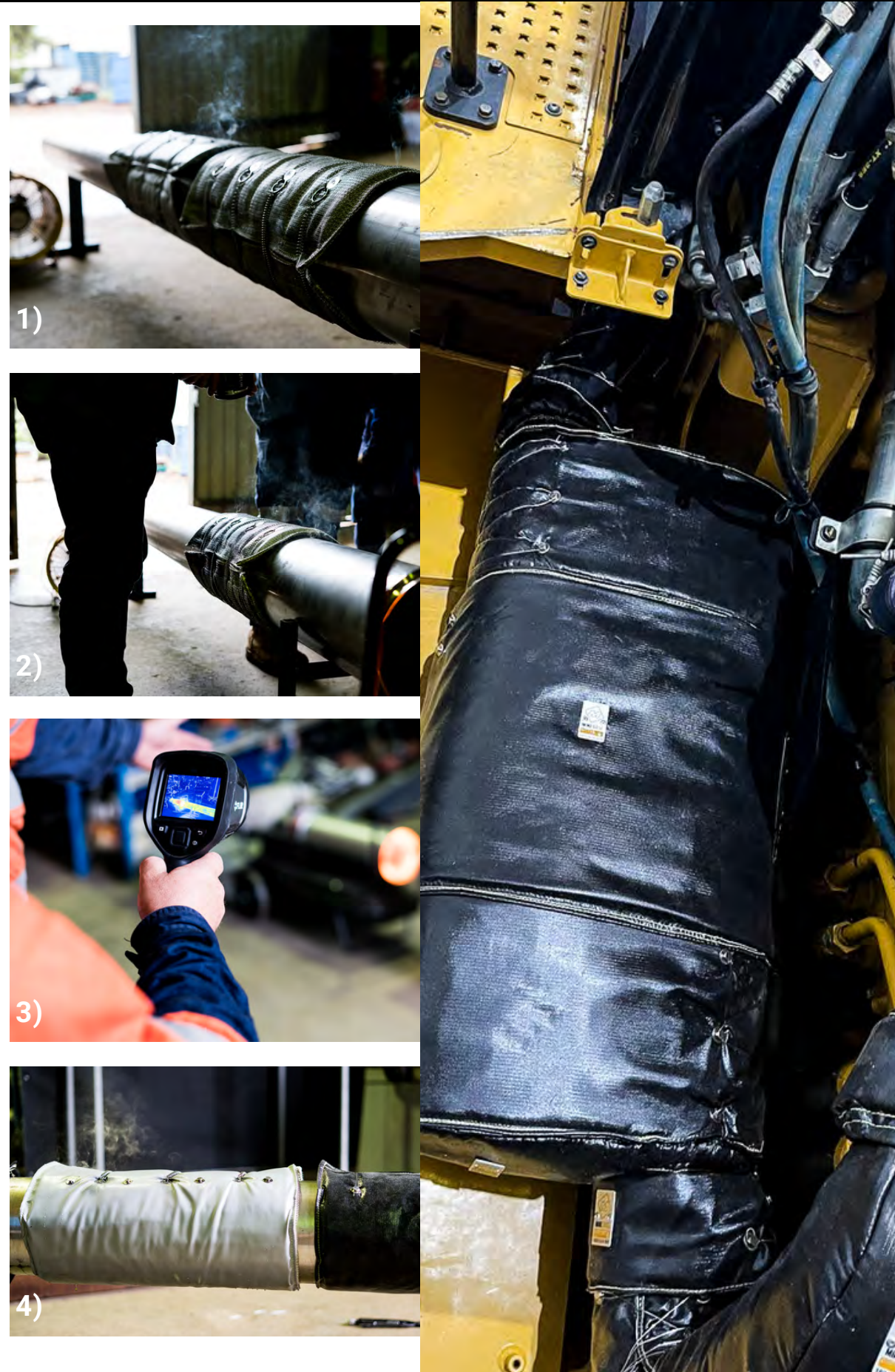
We regularly test new and different products and materials in the marketplace to ensure that we are providing the best possible solution to the industry's ever-changing needs and requirements.

Be rest assured we will always have the most up-to-date and quality products available.

The black MineBase insulation has proven to reduce the external temperature by 24% (compared to alternatives) as an average over a number of tests (**photos 3 and 4**).

The silver material with an inner and outer layer of mesh fared the worst as the mesh became a heat conductor over a period of time (**photos 1 and 2**). Any new findings from tests conducted by the MineBase team will be continually brought forward.

"We are continually testing our products with cutting-edge technology in Thermal Imaging and temperature testing".



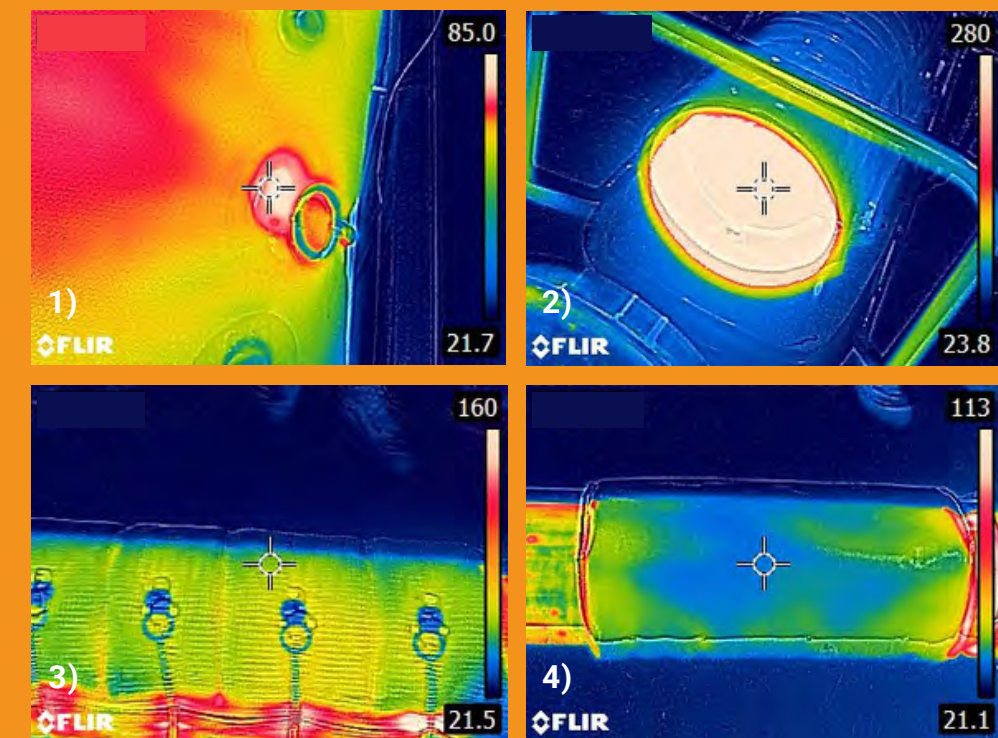
PRODUCT TESTING - HEAT

Photo 1) Clearly displays the clip and spring method becoming a dangerous conductor of heat.

Photo 2) Shows the test pipe heat during the test.

Photo 3) Demonstrates alternative Lagging product with the clips and springs and mesh on the outer and inner layer. Some points of interest are the mesh itself, the stitching, and the clips on the bottom.

Photo 4) Shows a much lower temperature for the MineBase black material with minimal stitching and stud method.



PRODUCT TESTING - OIL

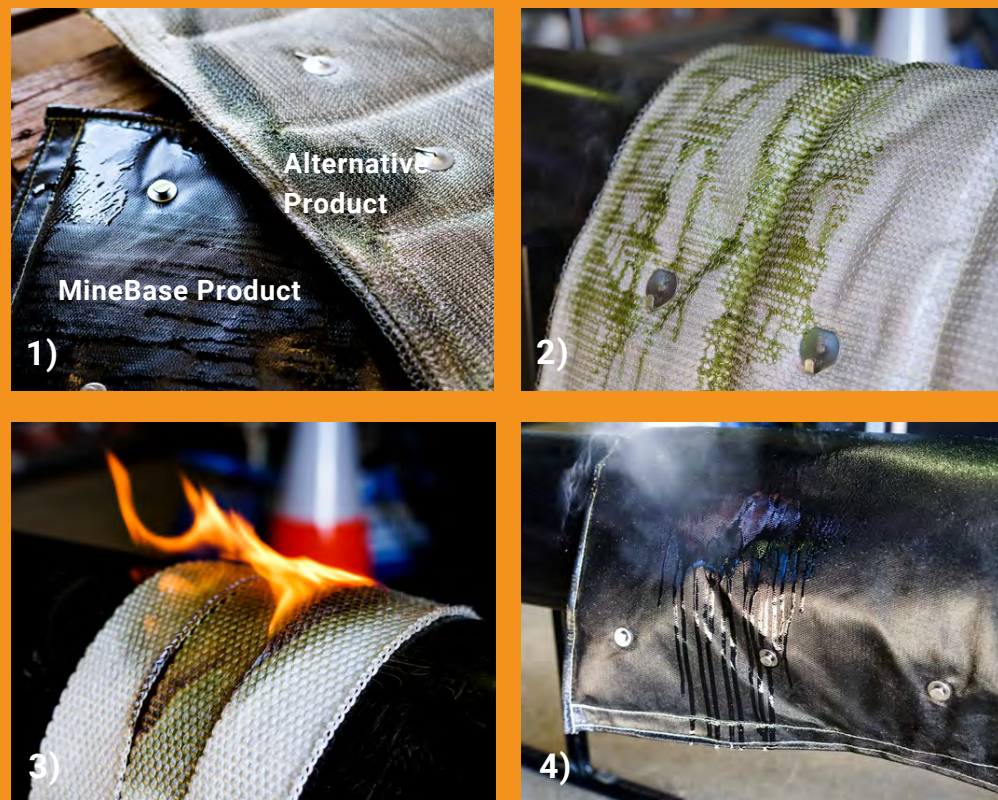
We conducted an experiment on the repelling properties of different types of insulation which confirmed what we believed our unique safety edge to be.

Photo 1) Shows the inner layer of an alternative blanket style has absorbed the oil and potentially could become a hazard. The MineBase product has repelled the oil.

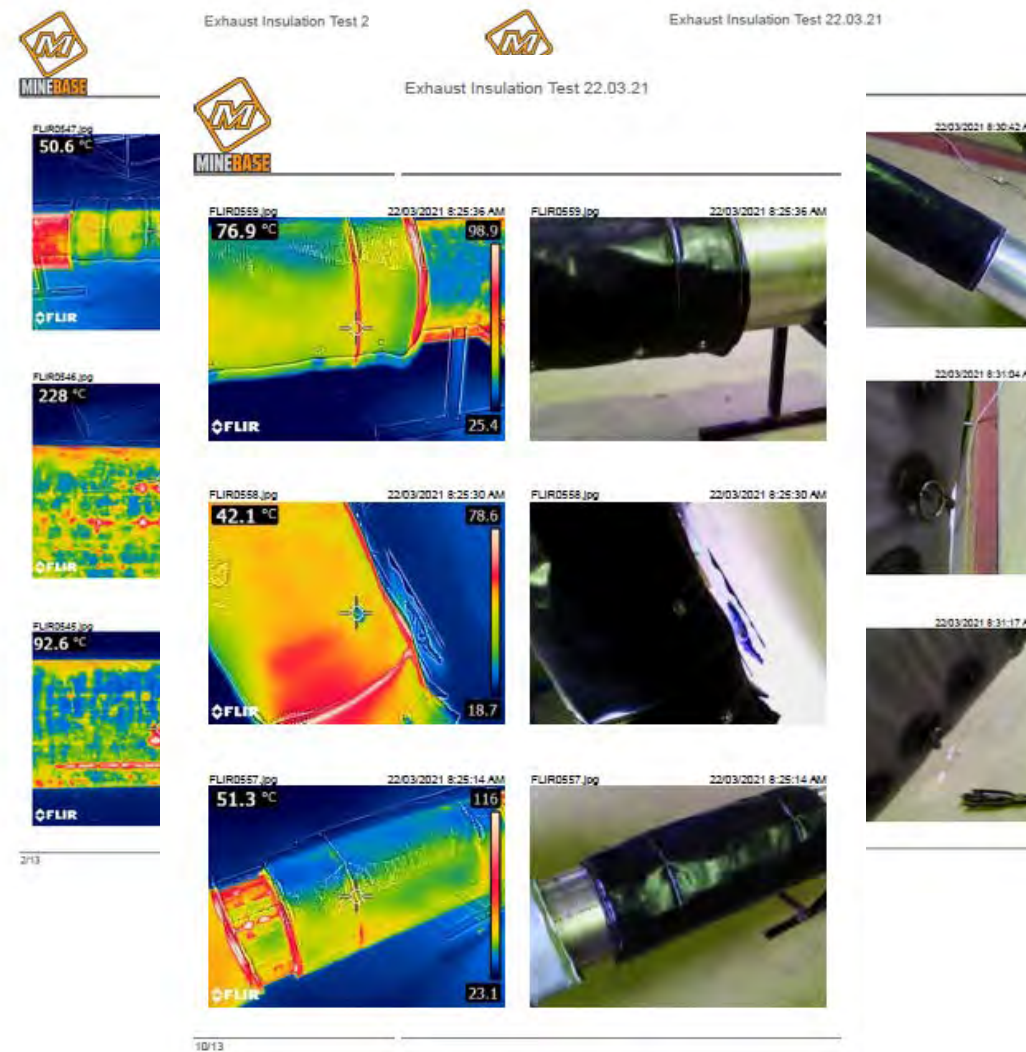
Photo 2) Shows alternative product absorbing oil through excess stitching and outer layer of mesh. This will allow the entire blanket to become saturated in flammable liquid which could become a hazard in its own right.

Photo 3) This is an example of an alternative fibreglass product used by different manufacturers in their insulation products. As can be seen here once oil is absorbed it becomes an ignition point.

Photo 4) Demonstrates the repelling properties of MineBase insulation which will, in turn, avert a crisis that is particularly important in a mining environment.



CERAMIC COATING AND THERMAL INSULATION



MineBase provides a proactive approach to thermal insulation inspections. This includes a comprehensive thermal image with temperature logging, alongside a still real-time photo to highlight any areas of potential threat or degradation.

We often get asked how effective ceramic coating is in comparison to Thermal Insulation Blankets. From our experience, we have found that ceramic coating only slows down how quickly a surface temperature reaches its maximum. It does not reduce the original hot surface temperature.

This can be particularly misleading in infrared thermal imaging devices as the ceramic coated surface will reflect the infrared beam from the testing device and therefore give a false reading.

Specialist Contact:

If you have any further technical questions or inquiries please contact our Lagging Specialist.

Jerry Mansley

Email: jerry@advanceglobal.com.au

Phone: 1800 624 088



"Since MineBase has been involved there have been no reportable incidents directly relating to fires started underground from Lagging not being to standard."



DPFs & Catalytic Purifiers

WHAT ARE DPFS & CATALYTIC PURIFIERS?

Diesel Particulate Filters (DPF's) and Catalytic Purifiers are some of the solutions widely used in the industry to reduce emissions.

Catalytic Purifiers are used to reduce harmful gases and change their composition via a reaction within the catalyst to make them less harmful in the working environment.

Diesel Oxidation Catalyst (DOC)

DOC Purifier - is a flow-through filter that contains precious metals to start the oxidation of hydrocarbons, carbon monoxide and unburnt fuel and oil.

- Highly durable metallic core
- Cost-effective
- Low maintenance
- Available as an add-on unit to an existing system
- Can be adapted to suit bespoke OEM applications

Partial DPF

Is a flow-through metallic filter that removes over 60% of diesel particulate matter.

- Low maintenance
- Low accumulation of soot particles
- Available as an add-on unit to an existing system
- Can be adapted to suit bespoke OEM applications
- Almost no increase in backpressure

Wall Flow DPF

It is a ceramic honeycomb-style substitute blocked one end to trap diesel particulate matter over 99% allowing airflow only through ceramic walls.

- These DPFs are passive, requiring no active regeneration or fuel additives.
- Removes ultra-fine and nano particulates.
- These are customized to suit bespoke OEM applications.

HOW DO THEY WORK?

Diesel Oxidation Catalyst (DOC)

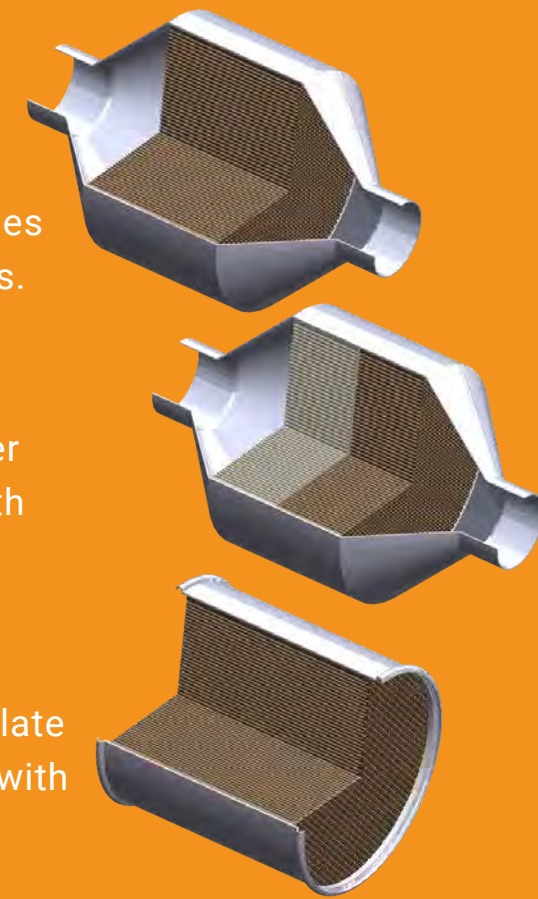
Removes toxic emissions from exhaust gases such as carbon monoxide and hydrocarbons.

Partial DPF

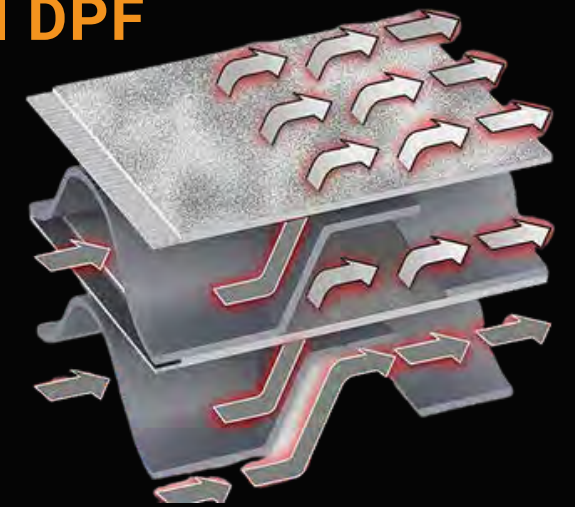
Partially filters diesel particulate matter over 60% - for best results use in conjunction with DOC.

Wall Flow DPF

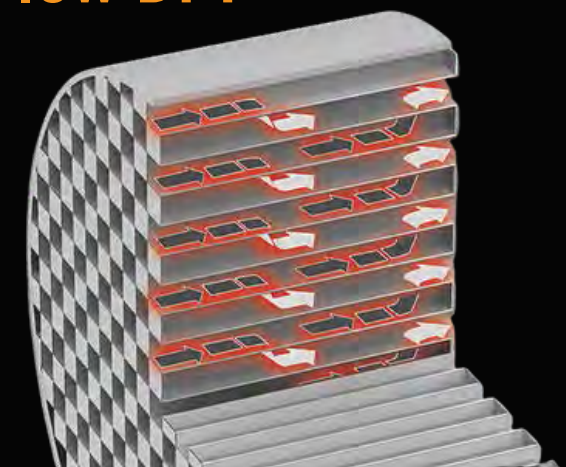
Completely traps over 99% of diesel particulate matter - for best results use in conjunction with DOC.



Partial DPF



Wall Flow DPF



DIESEL EMISSION CONTROL

Diesel Exhaust Emissions come from engines burning diesel fuel. It is a complex mixture of gaseous vapours, liquid aerosols and particulate substances.

These substances are the products of combustion.

Gases and Vapours - these are the gases found in air like nitrogen, oxygen, water vapour and carbon dioxide. There are also hazardous chemicals nitrous oxide, nitrogen dioxide, sulphur dioxide and carbon monoxide.

Fine particles known as **Diesel Particulate Matter (DPM)** including fine carbon particles - hazardous chemicals known as poly aromatic hydrocarbons (PAHs) adhere to the surface of carbon particles. **DPM** can act like a gas and stay airborne for long periods of time.



Symptoms of Carbon Monoxide Poisoning:



CHEST PAIN



HEADACHES, DIZZINESS AND FATIGUE



MUSCLE WEAKNESS AND CRAMPS



CONFUSION



COLLAPSE



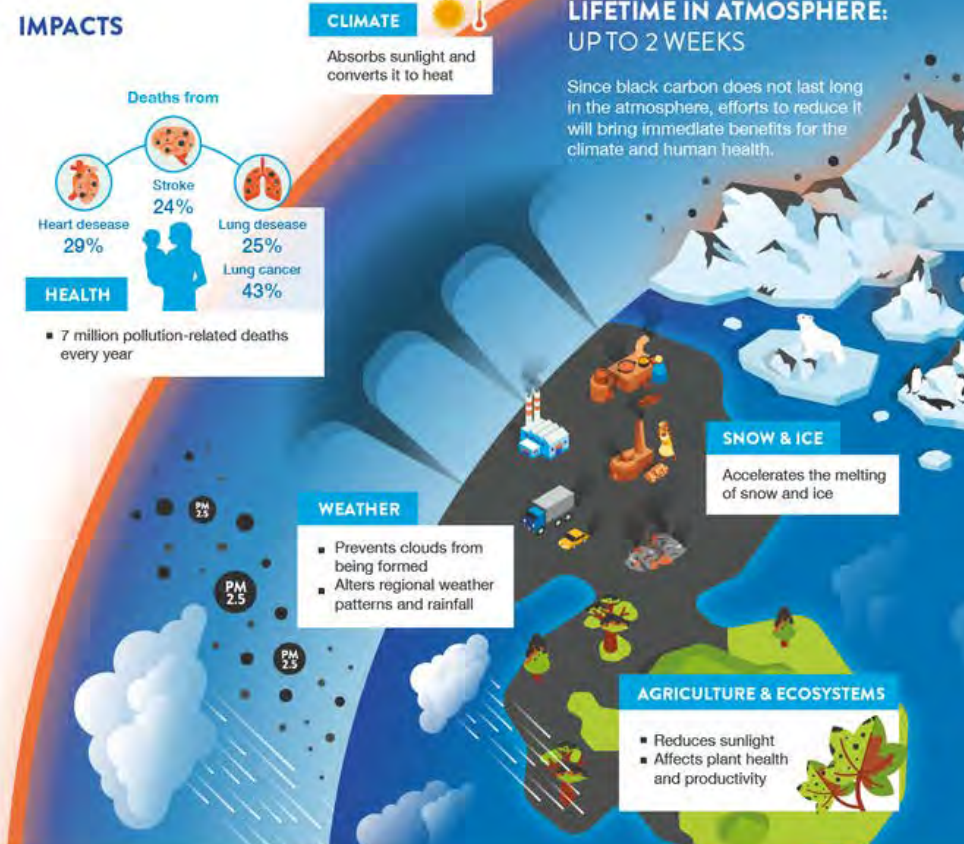
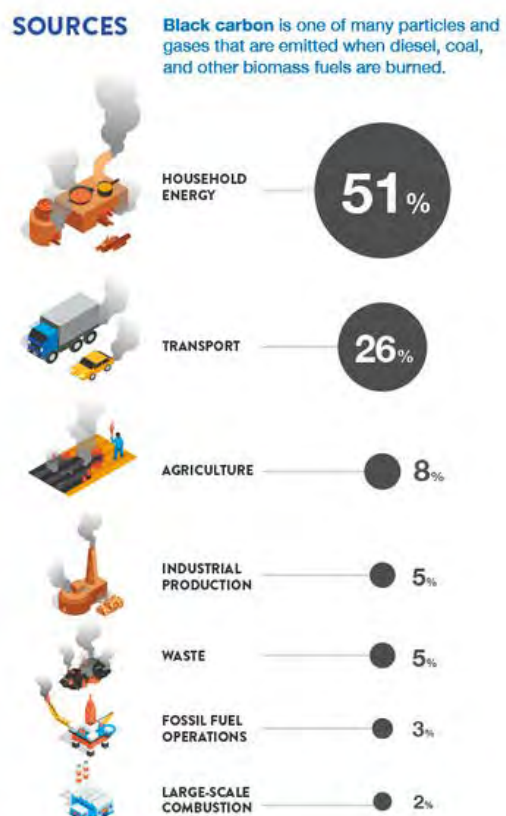
SHORTNESS OF BREATH



BLURRY OR DOUBLE VISION

BLACK CARBON (BC)

Black carbon, or soot, is part of fine particulate air pollution (PM_{2.5}) and contributes to climate climate.



WHY WE ARE CONCERNED WITH THESE TOXIC ELEMENTS:

Hydrocarbons

Can penetrate deep into the respiratory system, producing inflammation, narrowing of the airways leading to deprivation of oxygen for everyday bodily functions.

Carbon Monoxide

It is a poisonous, colourless, odourless and tasteless gas. In large amounts, this can overcome you in minutes, without warning causing you to lose consciousness and suffocate.

Diesel Particulate Matter

Can be so fine (less than 1-micron diameter) that it penetrates deep into the respiratory system which can lead to heart and lung damage.

WHY IS CLEANING AND MAINTENANCE CRITICAL?

Wall-Flow DPFs, in particular, require regular cleaning and maintenance programs to ensure the maximum lifespan possible.

These filters eliminate over 99% of particulate matter. Due to this, they block up and will no longer function as they are designed to. Furthermore, they will be rendered useless and unrepairable if a maintenance schedule is not followed. This could potentially lead to further damage to the asset over time. There is value in the regular maintenance of your DPF. We also recommend using high-grade manufacturer spec oil in the engine which has lasting benefits not only to the vehicle life but also to the DPF, due to cleaner emission on combustion.

MineBase offers a full tailored maintenance and cleaning schedule for DPFs of all shapes and sizes. We also offer a spare replacement while this is being carried out.

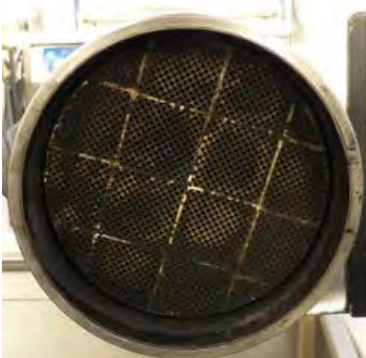


SOME BRANDS WE CATER FOR:

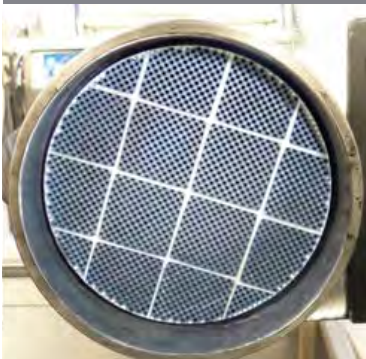
- CAT
- KOMATSU
- ELPHINSTONE
- NORMET
- DOOSAN
- SANDVIK
- VOLVO
- HITACHI
- ATLAS COPCO
- JACON EQUIPMENT

OUR UNIQUE MINEBASE DPF CAPABILITIES:

- ✓ Highest quality material used in manufacturing.
- ✓ We use the latest technology in testing and manufacturing.
- ✓ We can install the DPF for you.
- ✓ Tailored design and manufacturing for bespoke applications.
- ✓ We provide a fast turnaround on cleaning and servicing.
- ✓ Our DPF's results are backed up by testing and reporting.
- ✓ Backpressure monitors and data loggers are available to ensure engine protection.
- ✓ Exchange and rotatable plans are available.



Before Cleaning



After Cleaning



A Clogged Up DPF

FAQS ABOUT DPFS:

Can DPF's be covered with Thermal Insulation?

Yes, it is advisable to cover them for two reasons. One, to reduce the external temperature. Two, to keep the internal heat up making the DPF work more effectively.

Do they have directional flow?

Yes, most DPF combinations are stamped with a flow direction indicator. This is because most have a Catalyst incorporated inline which can only allow flow one way.

Do DPF's reduce the power of the engine?

No, a well maintained DPF will not make any difference to an engine's performance. A blocked DPF may cause increased backpressure which could affect the engine's performance and requires immediate attention.

What type of fuel do I use?

Manufacturers strongly recommend the use of high quality Non-Bio fuels.

Can I use any size DPF on my machine?

No, our DPF's are tailored to fit both specific engine capacity and physical restrictions.

Are DPF's effective?

Yes, DPF's are proven to eliminate 70-99% of diesel particulate matter depending on the type of DPF (partial or wall-flow).



BACKPRESSURE MONITORS & DATA LOGGERS

Being a filter, DPF's can restrict flow through the exhaust which is also known as backpressure.

All MineBase DPF's are tested to ensure that there is no extra flow through restriction before it leaves the factory.

However, once the filter is commissioned, naturally they start to block up with particulates which in turn, restricts the flow levels from that of a brand new unit. Therefore it is very important that you have your DPF's regularly serviced and cleaned.

This prevents excess backpressure from damaging your engines. MineBase offer service follow-ups to remind you when your DPF needs to be cleaned.



MineBase's Data Logger includes Plug and Play Harness

Backpressure Monitors and Data Loggers provide the operator with a real-time indication of backpressure and will sound an alarm when pressure exceeds the recommended amount.

Service personnel can also download a history of backpressure from a selected time frame to see the trends and patterns for further diagnostics. For this, we use the latest and most trusted equipment available.

When a machine is operating at high revs, it will create heat and activate the catalyst pre the DPF. This creates even more heat stimulating passive regeneration of the DPF.

BENEFITS OF A MINEBASE DPF:

- ✓ They help to protect the environment compared to alternative options.
- ✓ Cleans air through the complete treatment.
- ✓ Makes operating machinery in partially enclosed areas safer for operators, i.e. tunnel entrances, road cuttings, underground operations.
- ✓ Removes hydrocarbons and carbon monoxide.
- ✓ Prevention of dangerous and unsightly soot particle build-up.
- ✓ We tailor our DPFs to suit individual needs, it's not just one size fits all!



Example of a DPM Report

Knowing whether your emissions control method is working effectively is paramount. That's why we offer a measuring and reporting service that will track and trend your particulate and gas levels.

We use the latest and most trusted measuring equipment available in the market. These tests are conducted on-site for your convenience.

Diesel Particulate Matter Measurement (DPMM):

Tests a DPF (Diesel Particulate Filters that are fitted onto machines with diesel engines) to see how well it is running.


Gaseous Testo 340:

Measures levels of carbon monoxide, nitrous oxide and other harmful gases that can be produced in combustion engines.

If you have a diesel vehicle, then it's important to monitor how effectively your filters are performing. The filtration process reduces harmful gases from polluting the environment or people working with diesel engines in confined spaces. This is critical for the operation of heavy machinery at underground mine sites which will not allow machines to enter if they fail this test!

TEST DESCRIPTION		DPM & Gas	REPORT RESULT:	PASS	
DATE :	3/12/2021	CUSTOMER:	MAAS		
FILTER TYPE/S:	CSWFOC	SITE:	MAAS Workshop		
Equipment Make:	CAT	Model:	CS68B	Hours:	N/A
Machine Serial No.:	CS68BLM680C193	Asset ID:	N/A	Registration:	CG 63 L2
Engine Make:	Volvo	Engine Model:	C7.1	Engine SMU/Km:	N/A
Engine No.:	E7A45540	Engine Kw:	117	Year:	2021
Method to load Engine as per MDG29					
Diesel Particulate:		20 Seconds Low Idle - 20 Seconds Stall - 20 Seconds Low Idle			
Gaseous Emissions:		40 Seconds Stall - 40 Seconds High Idle - 40 Seconds Low Idle			
TEST EQUIPMENT	EQUIPMENT TYPE	SERIAL NUMBER	CALIBRATION DATE:		
TESTO 340	Flue Gas Analyser	62658951	20/06/2021		
DPM-RT2	Diesel Particulate Analyser	200010	17/08/2021		

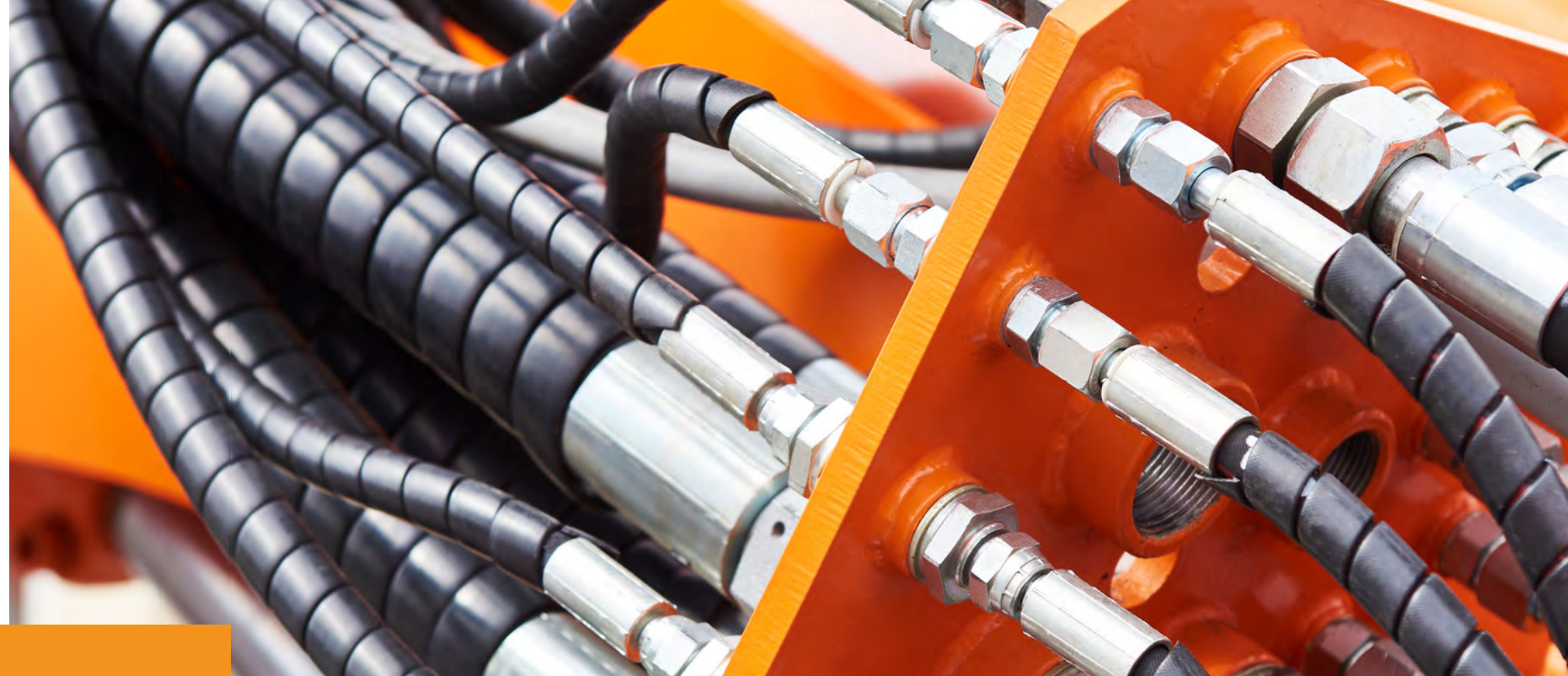
Example of a Gas Test Report

A large yellow mining truck is parked on a dirt road at a quarry. A yellow and red crawler loader is positioned next to it, with its bucket raised and dumping material into the truck's bed. The background shows a rocky hillside under a cloudy sky.

"The order process with MineBase is very easy and straight forward and the guys are a pleasure to deal with. I highly recommend them!"
- Andrew Ison Awcon

Hydraulic Hose Protection

MineBase has a wide range of hydraulic hose spiral wrap which can be colour coded for aesthetics and in some applications for ease of identification. We also have protective sleeves available, preventing fluid injection or severe injury if there is a burst.



BENEFITS OF MINEBASE

HYDRAULIC HOSE PROTECTION:

- ✓ Australian Made.
- ✓ Comes in various colours; RED, BLUE, YELLOW. A wide range of sizes suits most hose diameters.
- ✓ Developed to increase the service life of hydraulic hoses.
- ✓ Manufactured from tough HDPE for ultimate protection against abrasive wear and crushing damage.
- ✓ Unique rounded edges make it easy to install and reduces the risk of exposed sharp edges. Can be used to protect a single hose or to bundle hoses/cables together.
- ✓ Resistant to chemical attack and suitable for use in the most aggressive environments. Suitable for use with all hydraulic fluids including glycol and phosphate ester-based products.
- ✓ Suitable for use with equipment operating across a wide temperature range (-10°C to 90°C).
- ✓ Fire-resistant and anti-static (FRAS) versions are available for use in sensitive environments.

HYDRAULIC HOSE PROTECTION

Part Number	Outside Dia. mm.	M/Box
HYD-12	12mm	50m
HYD-16	16mm	20m
HYD-20	20mm	20m
HYD-25	25mm	20m
HYD-32	32mm	20m
HYD-40	40mm	20m
HYD-50	50mm	20m
HYD-63	63mm	20m
HYD-75	75mm	20m
HYD-90	90mm	20m
HYD-110	110mm	12m
HYD-125	125mm	12m
HYD-140	140mm	8m
HYD-160	160mm	8m

All wall thicknesses have A +/- tolerance. All sizes are nominal. Operating Temps are at -75 to 123 degrees C. The standard colour is Black. Colours are available in Red, Yellow and Blue; with a 15% extra charge rate.

FIRE RESISTANT ANTI STATIC (FRAS)

Part Number	Outside Dia. mm.	M/Box
HYD-12FRAS	12mm	50m
HYD-16FRAS	16mm	20m
HYD-20FRAS	20mm	20m
HYD-25FRAS	25mm	20m
HYD-32FRAS	32mm	20m
HYD-40FRAS	40mm	20m
HYD-50FRAS	50mm	20m
HYD-63FRAS	63mm	20m
HYD-75FRAS	75mm	20m
HYD-90FRAS	90mm	20m
HYD-110FRAS	110mm	12m

All wall thicknesses have A +/- tolerance. All sizes are nominal. Operating Temps are at -75 to 123 degrees C.

The standard colour is Black. Colours are available in Red, Yellow and Blue; with a 15% extra charge rate.



POWERITE BURST PROTECTION SLEEVE

Part Number	Width (Flat-mm)	M/Box
FRAS PRS18	32mm	50m
FRAS PRS23	44mm	50m
FRAS PRS29	50mm	50m
FRAS PRS36	61mm	50m
FRAS PRS40	67mm	50m
FRAS PRS45	75mm	50m
FRAS PRS56	92mm	50m
FRAS PRS63	103mm	50m
FRAS PRS71	116mm	50m
FRAS PRS93	150mm	50m
FRAS PRS110	177mm	50m

All sizes are in 50m Lengths. The standard colour is Black. Colours are available in Red, Yellow and Blue; with a 15% extra charge rate.

Fuel Line Protection

Fuel lines rupturing can be extremely dangerous in many ways, none more than the risk of fire!

We can provide a protective sleeve that will cover the line and be secured at the line's highest point and loose on the bottom.

This will prevent a ruptured fuel line from spraying onto a hot surface and causing a fire.

The fuel will be suppressed within the protective sleeve and run down to the low point away from the hot surfaces.



Did You Know?

MineBase's fuel line protection is made of E-glass fibre braided and coated in heavy-duty pure silicon rubber.

This rugged silicone coating makes the sleeve resistant to most chemicals, including hydraulic fluids, oils and fuels.

The coating also makes the sleeve resistant to abrasion and fraying.

Fuel line protection sleeves can be used to protect brake lines, fuel lines, wiring harnesses and cables.



FUEL LINE PROTECTION

Part Number	Description
SHC12	12mm Silicon Coated Hose
SHC16	16mm Silicon Coated Hose
SHC19	19mm Silicon Coated Hose
SHC22	22mm Silicon Coated Hose
SHC25	25mm Silicon Coated Hose
SHC32	32mm Silicon Coated Hose
SHC38	38mm Silicon Coated Hose
SHC50	50mm Silicon Coated Hose
SHC57	57mm Silicon Coated Hose
SHC64	64mm Silicon Coated Hose
SHC68	68mm Silicon Coated Hose
SHC75	75mm Silicon Coated Hose

Colours are available in **Red** and **Black**.

Fleet Service Fitout

Do you have a large fleet to fit out to comply with site specs? MineBase offers a complete fit-out service from scratch with all componentry being available for individual purchase.

We can supply and install or just supply in vehicle allocated lots for your convenience.



WHAT WE CAN DO FOR YOUR VEHICLE:

- ✓ Wheel Nut Indicators
- ✓ Safety Stickers
- ✓ Emergency Stops
- ✓ Fire Suppression
- ✓ Additional Work Lighting
- ✓ Aluminum Door Cards
- ✓ Floor Mats
- ✓ Wheel Chocks
- ✓ First Aid Kits
- ✓ Reflective Tape
- ✓ Whip Flags
- ✓ Explosive Trays
- ✓ Fuel Line Protection
- ✓ Fire Resistant Paint
- ✓ Crush prevention System
- ✓ Flashing Lights and Beacons
- ✓ Specialised Vehicle Set-Up
- ✓ Upgraded Springs & Suspension
- ✓ Fire Extinguishers and Brackets
- ✓ Pressure Relieving Radiator Caps
- ✓ High Mount Light/Mine Bars
- ✓ Isolation and Lockout Points
- ✓ Vehicle Identification Stickers
- ✓ Thermal Insulation Blankets
- ✓ Burst Protection Sleeve
- ✓ Safety Points Painted
- ✓ Safety Triangles
- ✓ Bullbars
- ✓ Mud-guards
- ✓ Seat Covers



Fire Safety Equipment



Prevention is always our number 1 priority. However, we do know that sometimes things out of the ordinary can happen, that's why we need to be prepared!

At MineBase, we carry a large range of fire extinguishers and componentry. We also offer a testing and tagging service to ensure that your last line of defence is in tip-top condition.

FIRE SAFETY EQUIPMENT

Part Number	Description
CO2 Fire Extinguishers	
3007/17	2KG CO2 Fire Extinguisher
3008/17	3.5KG CO2 Fire Extinguisher
3009/17	5KG CO2 Fire Extinguisher
Water Fire Extinguisher	
1013/17	9L Water Extinguisher
Foam Fire Extinguisher	
9LFOAM-FF	9L Foam Extinguisher
ABE Dry Chemical Extinguishers	
2040/17	1KG ABE Dry Powder Extinguisher
2062/17	1.5KG ABE Dry Powder Extinguisher
2055/17	2.3KG ABE Dry Powder Extinguisher
2056/17	2.5KG ABE Dry Powder Extinguisher
2058/17	4.5KG ABE Dry Powder Extinguisher
2060/17	9KG ABE Dry Powder Extinguisher
Fire Extinguisher Bracket	
70074	2.5KG-4.5KG Fire Extinguisher Bracket
70076	9KG Fire Extinguisher Bracket
Fire Extinguisher Plastic Cover	
80157	Plastic Cover for Fire Extinguisher

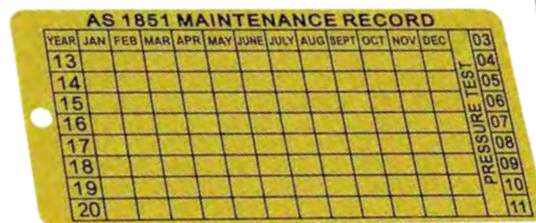
ARE YOUR FIRE EXTINGUISHERS TAGS UP TO DATE?

Did you know that your **fire extinguishers eventually expire**? If you think that you have had your office, machine or home extinguisher for over 7 years, there's a good chance that it has expired.

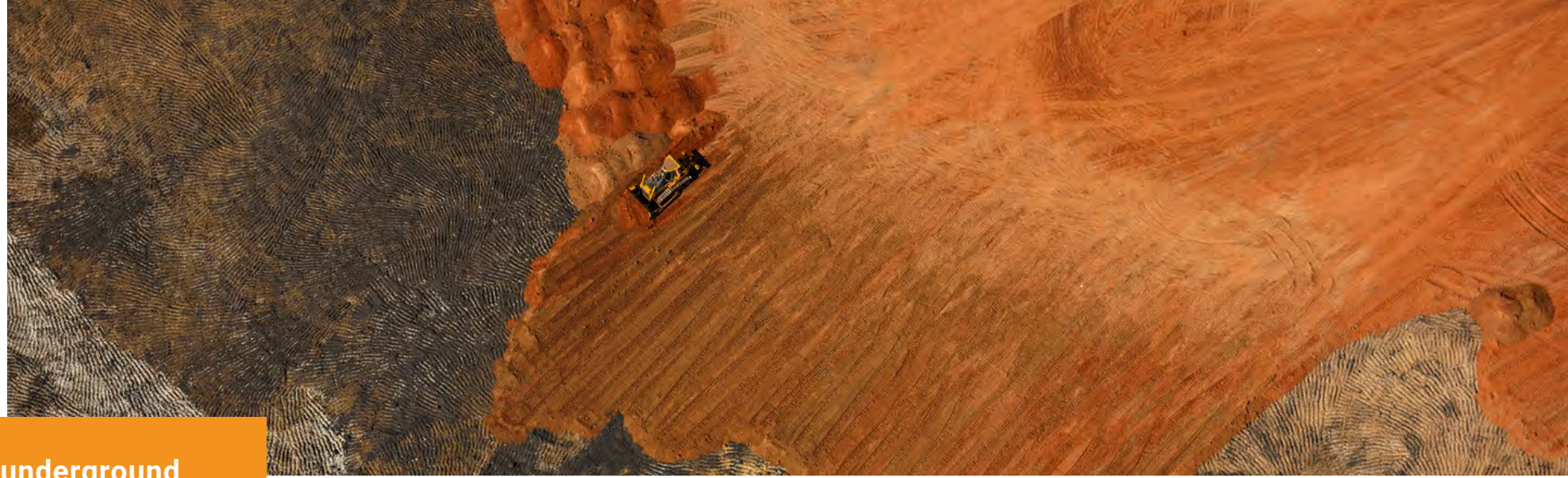
Fire extinguishers need to have an **external maintenance examination** conducted on a **yearly** basis.

They also need to have an **internal examination** conducted at anywhere from **1-6 year** intervals depending on the type of extinguisher. For example, a dry chemical, stored pressure fire extinguisher must have an internal examination every 6 years. Some environments may require more frequent testing.

Every fire extinguisher we provide comes with a metal tag to record maintenance. Maintenance should be performed by a fire safety specialist.



Mining Whip Flags



MineBase has mining whip flags available for both open pit and underground applications.

We also have LED illuminated poles available for extra visibility. These all come with a quick-release option for easy and fast removal.

WHAT ARE MINING WHIPS USED FOR?

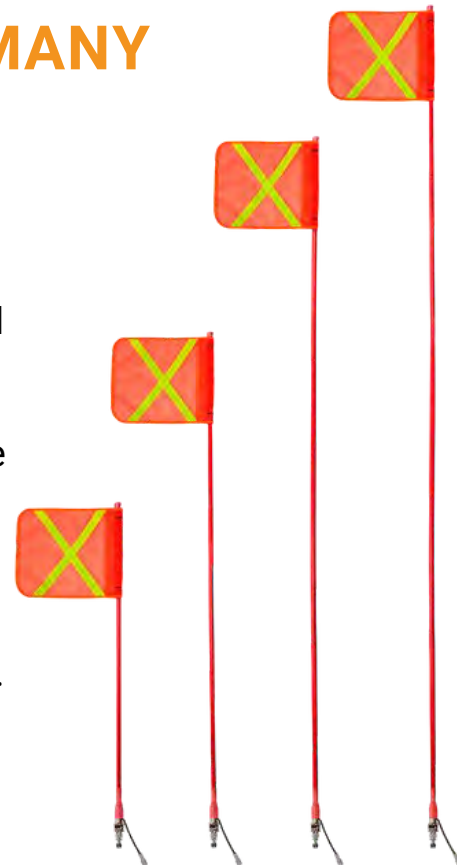
Vehicle safety flags (safety whips) are used to alert large vehicles to the presence of light or small vehicles (e.g., Landcruiser ute) when sharing zones. Mining whips prevent a great deal of damage and/or injury, therefore reducing insurance claims and downtime.

QUICK RELEASE/LED MINING WHIPS

Part Number	Description
MB1.2FLQR	1.2m - Standard - Quick Release/LED
MB1.3FLQR	1.3m - Standard - Quick Release/LED
MB1.4FLQR	1.4m - Standard - Quick Release/LED
MB1.5FLQR	1.5m - Standard - Quick Release/LED
MB1.6FLQR	1.6m - Standard - Quick Release/LED
MB1.7FLQR	1.7m - Standard - Quick Release/LED
MB1.8FLQR	1.8m - Standard - Quick Release/LED
MB1.9FLQR	1.9m - Standard - Quick Release/LED
MB2.0FLQR	2.0m - Standard - Quick Release/LED
MB2.2FLQR	2.2m - Standard - Quick Release/LED
MB2.3FLQR	2.3m - Standard - Quick Release/LED
MB2.4FLQR	2.4m - Standard - Quick Release/LED
MB2.5FLQR	2.5m - Standard - Quick Release/LED
MB2.8FLQR	2.8m - Standard - Quick Release/LED
MB2.9FLQR	2.9m - Standard - Quick Release/LED
MB3.0FLQR	3.0m - Standard - Quick Release/LED
MB3.1FLQR	3.1m - Standard - Quick Release/LED
MB3.2FLQR	3.2m - Standard - Quick Release/LED

MINEBASE MINING WHIPS HAVE MANY OPTIONS INCLUDING:

- ✓ Reflective Flag.
- ✓ The quick-release base is for quick & easy removal when not in use.
- ✓ Spring Base so that the flag will be less likely to be damaged when it meets an obstacle.
- ✓ A Fixed Base option.
- ✓ Illumination for extra visibility (especially at night).
- ✓ Australian Made.



QUICK RELEASE MINING WHIPS

Part Number	Description
MB1.2FQR	1.2m - Standard - Quick Release
MB1.3FQR	1.3m - Standard - Quick Release
MB1.4FQR	1.4m - Standard - Quick Release
MB1.5FQR	1.5m - Standard - Quick Release
MB1.6FQR	1.6m - Standard - Quick Release
MB1.7FQR	1.7m - Standard - Quick Release
MB1.8FQR	1.8m - Standard - Quick Release
MB1.9FQR	1.9m - Standard - Quick Release
MB2.0FQR	2.0m - Standard - Quick Release
MB2.2FQR	2.2m - Standard - Quick Release
MB2.3FQR	2.3m - Standard - Quick Release
MB2.4FQR	2.4m - Standard - Quick Release
MB2.5FQR	2.5m - Standard - Quick Release
MB2.8FQR	2.8m - Standard - Quick Release
MB2.9FQR	2.9m - Standard - Quick Release
MB3.0FQR	3.0m - Standard - Quick Release
MB3.1FQR	3.1m - Standard - Quick Release
MB3.2FQR	3.2m - Standard - Quick Release



FIXED BASE/LED MINING WHIPS

Part Number	Description
MB1.2FLFB	1.2m - Standard - Fixed Base/LED
MB1.3FLFB	1.3m - Standard - Fixed Base/LED
MB1.4FLFB	1.4m - Standard - Fixed Base/LED
MB1.5FLFB	1.5m - Standard - Fixed Base/LED
MB1.6FLFB	1.6m - Standard - Fixed Base/LED
MB1.7FLFB	1.7m - Standard - Fixed Base/LED
MB1.8FLFB	1.8m - Standard - Fixed Base/LED
MB1.9FLFB	1.9m - Standard - Fixed Base/LED
MB2.0FLFB	2.0m - Standard - Fixed Base/LED
MB2.2FLFB	2.2m - Standard - Fixed Base/LED
MB2.3FLFB	2.3m - Standard - Fixed Base/LED
MB2.4FLFB	2.4m - Standard - Fixed Base/LED
MB2.5FLFB	2.5m - Standard - Fixed Base/LED
MB2.8FLFB	2.8m - Standard - Fixed Base/LED
MB2.9FLFB	2.9m - Standard - Fixed Base/LED
MB3.0FLFB	3.0m - Standard - Fixed Base/LED
MB3.1FLFB	3.1m - Standard - Fixed Base/LED
MB3.2FLFB	3.2m - Standard - Fixed Base/LED

FIXED BASE MINING WHIPS

Part Number	Description
MB1.2FFB	1.2m - Standard - Fixed Base
MB1.3FFB	1.3m - Standard - Fixed Base
MB1.4FFB	1.4m - Standard - Fixed Base
MB1.5FFB	1.5m - Standard - Fixed Base
MB1.6FFB	1.6m - Standard - Fixed Base
MB1.7FFB	1.7m - Standard - Fixed Base
MB1.8FFB	1.8m - Standard - Fixed Base
MB1.9FFB	1.9m - Standard - Fixed Base
MB2.0FFB	2.0m - Standard - Fixed Base
MB2.2FFB	2.2m - Standard - Fixed Base
MB2.3FFB	2.3m - Standard - Fixed Base
MB2.4FFB	2.4m - Standard - Fixed Base
MB2.5FFB	2.5m - Standard - Fixed Base
MB2.8FFB	2.8m - Standard - Fixed Base
MB2.9FFB	2.9m - Standard - Fixed Base
MB3.0FFB	3.0m - Standard - Fixed Base
MB3.1FFB	3.1m - Standard - Fixed Base
MB3.2FFB	3.2m - Standard - Fixed Base



MINING WHIPS ACCESSORIES

Part Number	Description
MBF01	Pennant Flag with Reflective Stripe
MBFY01	Square Flag with Reflective "x"
MBRC	Red Caps for Whip Top
MBSG	Static Globe Multi-Volt 9-32v
MBFG	Flashing Globe 12/24 Volt
MBRL12	Rope Light
MBQRM	Male Base Pin Quick Release
SB002	Mine Flag Spring Base with Quick Release

SAFETY WHIPS WITH QUICK RELEASE

Part Number	Description
MB1.2FMLQR	1.2m - Safety Whip/Multi LED
MB1.5FMLQR	1.5m - Safety Whip/Multi LED
MB1.8FMLQR	1.8m - Safety Whip/Multi LED
MB1.2FRLQR	1.2m - Safety Whip/Rope Light
MB1.5FRLQR	1.5m - Safety Whip/Rope Light
MB1.8FRLQR	1.8m - Safety Whip/Rope Light

Fire Resistant Paint

Check out the before and after images of an 8-tonne excavator's hood. Our team stripped back and painted fire-resistant paint onto it.

The properties and benefits of fire-resistant paint are:

- Heat-insulating
- Vibration resistant

This extends fire retardancy of thermosets and other flammable ductile items as well as reduces core temperatures.

Get in contact with us to receive a quote for your fleet to be upgraded with Fire Resistant Paint!



First-Aid Kits

The MineBase first-aid kits comply with WHS 2019 regulations for work vehicles. They are loaded with ARTG registered quality extras like splinter probes, hydrogel burn gel, heavy-duty crepe bandage, instant ice pack and more.

FIRST-AID KITS

Part Number	Description
FAR1V20	Plastic Case
FAV1V30	Soft Case



Kit Includes:

- 50X ADHESIVE STRIPS, PLASTIC, 72 X 19MM, 50PK
- 4X ALCOHOL WIPE, SACHET
- 1X COLD PACK, INSTANT, LARGE
- 3X CONFORMING BANDAGE, 5CM, WHITE
- 3X CONFORMING BANDAGE, 7.5CM, WHITE
- 60X COTTON BALLS, 60PK
- 1X RESUSCITATION FACE SHIELD,
- 1X LEAFLET, CPR/EAR.WALLET SIZE
- 2X DISPOSABLE GLOVES, 2PK
- 1X EMERGENCY FIRST AID INFORMATION BOOKLET
- 1X EMERGENCY SHOCK BLANKET, SILVER SPACE
- 2X EYE PAD, STERILE
- 2X EYE WASH SOLUTION, 30ML AMPOULE
- 1X SPLINTER FORCEPS, STAINLESS STEEL, 12.5CM
- 2X GAUZE SWAB, 7.5 X 7.5CM, 5PK
- 1X HYDROGEL BURNS GEL, 3.5G SACHET
- 2X NON-ADHERENT DRESSING, 10 X 7.5CM, STERILE
- 2X NON-ADHERENT DRESSING, 5 X 5CM, STERILE
- 1X ACCIDENT REPORT NOTEBOOK WITH PENCIL
- 1X PAPER TAPE, 2.5CM X 5M, HYPO-ALLERGENIC, WHITE
- 1X PLASTIC BAG, RESEALABLE, LARGE, 305 X 230MM
- 1X PLASTIC BAG, RESEALABLE, MEDIUM, 230 X 150MM
- 1X PLASTIC BAG, RESEALABLE, SMALL, 125 X 100MM
- 2X POVIDONE IODINE SWABS
- 12X SAFETY PINS, ASSORTED, 12PK
- 1X SCISSORS, STAINLESS STEEL, 12.5CM
- 10X SPLINTER PROBE, DISPOSABLE
- 2X TRIANGULAR BANDAGE, COTTON, LARGE, WHITE
- 1X WOUND DRESSING, NO.14, STERILE

Wheel Chocks



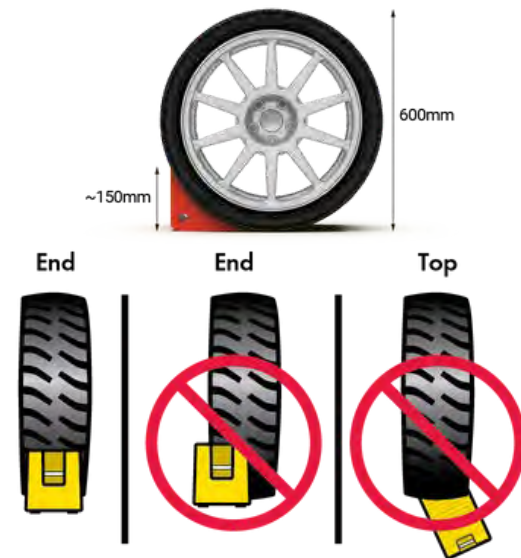
Wheel chocks are essential in keeping both man & machine safe on mine sites. Wheel chocks are a compulsory backup means of immobilising equipment both when parking up during maintenance or break downs. At MineBase we have your Wheel chock needs covered!

WHAT SIZE WHEEL CHOCK SHOULD I USE?

The height of the wheel chock should be **25% of the height of your wheel** and fit snugly against your tyre. For example, a wheel 600mm high, would require a wheel chock of 150mm.

When parking on a gradient it is recommended that at least two wheel chocks are used.

Most mine sites in Australia require all vehicles to use wheel chocks at all times.



WHEEL CHOCKS

Part Number	Description
CSP-DWQ-5T	LV PU - 5T
CSP-DWQ-30T	HV PU - 30T
WC1	Heavy Duty 255L x 180W
WC3	Truck Chock - 305L x 300W
WCH-001	Set with Handle
WCH-HV	HV Holder - Single Vertical
WCH-LV	LV Holder - Dual Type
WC-1	Small Chock with Rope



Radiator Caps

Australian mining sites utilise Minesafe caps that allow workers to safely release the pressure that builds up in a radiator.

As leaders in the industry for industrial cooling components and heat transfer solutions, MineBase can help you ensure your workplace complies with Australian Safety Standards.

WHY RADIATOR CAPS ARE SO IMPORTANT

MineBase radiator caps release pressure via brass, a material that doesn't absorb heat. Pin lever release systems help prevent scalding injuries and burns. Radiator caps are designed to seal the top of the radiator filler neck to prevent coolant loss, pressurise the cooling system and raise the boiling point of the coolant. Radiator caps are manufactured using either metal or plastic design depending on the vehicle manufacturer's specifications. The radiator cap must be compatible with the vehicle cooling system. The MineBase radiator cap range has been carefully researched and engineered to suit each specific application.

RADIATOR CAPS

Part Number	Description
CAPCOXS13	Small Cap - 13 PSI
CAPCOXM13	Medium Cap - 13 PSI
CAPCOXL13	Large Cap - 13 PSI



CAPCOXS13



CAPCOXM13



CAPCOXL13

Reflective Tape

MineBase's fluorescent safety tape is weather and solvent-resistant. They have been designed for rugged outdoor use on mining vehicles.

Mine sites require vehicles to be compliant with visibility safety standards. At MineBase we have all your safety needs covered.

WHY CHOOSE MINEBASE'S REFLECTIVE TAPE?

MineBase's reflective tape is die-cutttable and plotter cuttable. It's easy to apply to all vehicle surfaces. The tape has a single-layer prismatic construction with adhesive backing. It does not need edge sealing and has outstanding high-pressure washing capabilities and resists edge lift. It is highly resistant to most industrial cleaning processes and is also impact resistant. MineBase's reflective tape has outstanding long-distance nighttime and daytime visibility.



Series	Code	Description
CLASS 1	CT5LG	LIME GREEN REFLECTIVE TAPE - 50mm - 45m
	CT5RY	RED/YELLOW REFLECTIVE TAPE - 50mm - 45m
	CT5Y	YELLOW REFLECTIVE TAPE - 50mm - 45m
	CT5O	ORANGE REFLECTIVE TAPE - 50mm - 45m
	CT5R	RED REFLECTIVE TAPE - 50mm - 45m
	CTRW	WHITE REFLECTIVE TAPE - 50mm - 45m
	CT5W	RED/WHITE REFLECTIVE TAPE - 50mm - 45m
CLASS 2	RT3RY	RED/YELLOW REFLECTIVE TAPE - 50mm - 45m
	RT3RW	RED/WHITE REFLECTIVE TAPE - 50mm - 45m

Seat Covers

Seat covers are now more than often a requirement on mine sites. We can provide seat covers for heavy and light mine vehicles to help keep you compliant.

Made in Australia and tried and tested! Our ultra heavy-duty seat covers meet stringent Australian Standards for strength and endurance.

BENEFITS OF MINEBASE SEAT COVERS

- ✓ Tailor-fit patterns even extend to the headrest. Our seat covers protect the full seat including built-in and separate headrests, armrests, cup holders, levers and adjusters.
- ✓ All MineBase's seat covers are made in Australia.
- ✓ They are designed to be as easy to fit as possible.
- ✓ We can provide seat covers in canvas or poly.
- ✓ UV, rot and mildew resistant.
- ✓ 24+ hour water resistance.
- ✓ Ultra heavy-duty
- ✓ Available for light and heavy mine vehicles



Wheel Nut Indicators

WHAT ARE WHEEL NUT INDICATORS?

A common type of loose wheel nut indicator is a small pointed tag that is fixed to the lug nuts of the wheels of large vehicles.

The tag rotates with the nut, and if the nut becomes loose, the point of the tag shifts noticeably out of alignment with the other tags. If too many lug nuts are loosened, the wheel can detach from the wheel stud. Loose wheel nut indicators allow identification of loose nuts before this can occur.

Loose wheel nut indicators are used both by auto mechanics and drivers to identify lug nuts that require tightening, as well as by accident investigators to detect faults after accidents.

WHEEL NUT INDICATORS

Part Number	Description
WS19Y	19mm Indicator
WS21Y	21mm Indicator
WS21EXT	21mm Indicator - Extended
WS22Y	22mm Indicator
WS32Y	32mm Indicator
WS41Y	41mm Indicator



Discrete Mine Residue Remover

Discrete has been used for over a decade now in the mining industry to remove that stubborn mineral film that builds up on mining vehicles and equipment.

Made in Australia; Discrete will outperform any hazardous or dangerous product such as acids.

WHY USE DISCRETE IN THE MINING INDUSTRY?

1. **It's safe!** – Discrete is an organic product and therefore does not contain any hidden nasties such as acids!
2. **Environmentally friendly!** – Discrete is made from natural products.
3. **It won't damage your equipment!** – Discrete is safe to use on most surfaces. *
4. **Prolong your vehicle's lifespan!** – By using Discrete to remove mineral build-up on your machinery, you will prevent premature corroding of metal components.
5. **Keep your fleet neat!** Discrete will make your equipment stand out from the pack!

*may react to galvanised surfaces and remove the galvanised coating to expose bare metal.

Discrete has proved to be very powerful in the mining industry. It is especially safe and environmentally focused. Discrete only uses natural, organic materials to break down this film by reversing the process of setting.



IK DISCRETE SPRAYING UNITS

There are three different sizes of handheld and backpack spraying units available in our Discrete range. These sprayers are heavy duty and include viton seals.

Handheld -
IK 1L



Handheld -
IK 6L



Backpack - IK 12L



WITH DISCRETE

WITHOUT DISCRETE



MINEBASE **LIGHTING,** **SAFETY &** **ELECTRICAL**

EMERGENCY LIGHTING

- 56 Beacons**
- 66 LED Lighting**
- 77 BE325 Beacon**
- 83 Minebars**

WORKLAMPS

- 84 Heavy Duty LED**
- 102 General Purpose LED**

REVERSING & AUDIBLE SAFETY

- 108 White Sound Reversing Alarm**
- 109 Tonal Reversing Alarms**
- 112 CCTV Systems**
- 113 Obstacle Detection**
- 114 Horns & Buzzers**
- 115 Sirens & Intercoms**
- 117 LED Safety Light**

BATTERY MASTER SWITCHES

- 118 Fixed Handle**
- 119 L Handle**
- 120 Terminal Insulators**

CONTENTS

Emergency Lighting

BEACONS - MINEBASE DUAL COLOUR SERIES



103S00C Illuminated



103800C Illuminated

MINEBASE-DUAL COLOUR SERIES

3 modes available:

- Colour 1
- Colour 2
- Dual colour mode.

- 12 flash patterns in single colour mode
- 5 flash patterns in dual colour mode.
- 12-24V voltage.
- Environmentally sealed - IP67.
- Multi-voltage.
- Low current draw.
- 5 Year Warranty.

Code	Description
103800C	LED - 3 Bolt Dual Colour - Amber/Blue
103S00C	LED - 3 Bolt Dual Colour - Amber/Green
103700C	LED - 3 Bolt Dual Colour - Red/Blue

BEACONS - MINEBASE LOW PROFILE SERIES



103000 Illuminated



103010

MINEBASE-LOW PROFILE SERIES

- 12 flash patterns.
- 12-24V voltage.
- SAE Class 1 Rated Output.
- Environmentally sealed - IP67.
- Multi-voltage.
- Magnetic version features cigar plug with integrated on/off & pattern select switches.
- Low current draw.
- 5 Year Warranty.

Code	Description
103000	LED - 3 Bolt Coloured Lens - Amber
103000C	LED - 3 Bolt Clear Lens - Amber
103200C	LED - 3 Bolt Clear Lens - Blue
103300C	LED - 3 Bolt Clear Lens - Green
103400C	LED - 3 Bolt Clear Lens - Red

Code	Description
103010	LED - Magnetic Coloured Lens - Amber

BEACONS - MINEBASE HIGH-PROFILE SERIES

BEACONS - MINEBASE ROTATING LED SERIES



106000



106002



106010

MINEBASE HIGH-PROFILE SERIES

- 12 flash patterns.
- 12-24V voltage.
- SAE Class 1 Rated Output.
- Environmentally sealed - IP67.
- Multi-voltage.
- Magnetic version features cigar plug with integrated on/off & pattern select switches.
- Low current draw.
- 5 Year Warranty.



107000



108000



107002

MINEBASE ROTATING LED SERIES

- True rotating LED.
- Heavy-duty - virtually unbreakable.
- 12-24V voltage.
- LED's rated to 50,000 hours of operation.
- UV hard-coated polycarbonate lens for high durability in harsh conditions.
- SAE Class 1 Rated Output.
- The magnetic version features a 2600mm lead to cigar plug with an integrated switch.
- 5 Year Warranty.

Code	Description
------	-------------

106000 LED - 3 Bolt Coloured Lens - Amber

106200C LED - 3 Bolt Clear Lens - Blue

106300C LED - 3 Bolt Clear Lens - Green

106400C LED - 3 Bolt Clear Lens - Red

Code	Description
------	-------------

106010 LED - Magnetic Coloured Lens - Amber

106002 LED - Pole Mount Coloured Lens - Amber

Code	Description
------	-------------

107000 LED - 3 Bolt Coloured Lens - Amber

107200 LED - 3 Bolt Clear Lens - Blue

107300 LED - 3 Bolt Coloured Lens - Green

107400 LED - 3 Bolt Coloured Lens - Red

Code	Description
------	-------------

108000 LED - Magnetic Coloured Lens - Amber

107002 LED - Pole Mount Coloured Lens - Amber

BEACONS - MINEBASE 500 SERIES



503000



500000

MINEBASE 500 SERIES

- Free-form reflector provides 20% more light output than previous models.
- Whisper quiet rotators, running on stainless steel/acetal bearings.
- Multiple mounting configurations.
- Twist lock polycarbonate lens provides easy field maintenance.
- The magnetic model features a 2600mm retractable coil with a cigar plug.
- Dual voltage motor.

Code	Description
------	-------------

503000	Halogen - 3 Bolt Coloured Lens - Amber
--------	--

500000	Halogen - Magnetic Coloured Lens - Amber
--------	--

BEACONS - MINEBASE MIDI-VISION SERIES



403000



400000

MINEBASE MIDI-VISION SERIES

- Free-form reflector provides 20% more light output than previous models.
- Whisper quiet rotators, running on stainless steel/acetal bearings.
- Polycarbonate lens provides high durability in harsh conditions.
- Multiple mounting configurations.
- Twist lock polycarbonate lens provides easy field maintenance.
- The magnetic model features 2600mm retractable coil with a cigar plug.
- Dual voltage motor.

Code	Description
------	-------------

403000	Halogen - 3 Bolt Coloured Lens - Amber
--------	--

403200	Halogen - 3 Bolt Coloured Lens - Blue
--------	---------------------------------------

403300	Halogen - 3 Bolt Coloured Lens - Green
--------	--

403400	Halogen - 3 Bolt Coloured Lens - Red
--------	--------------------------------------

400000	Halogen - Magnetic Coloured Lens - Amber
--------	--

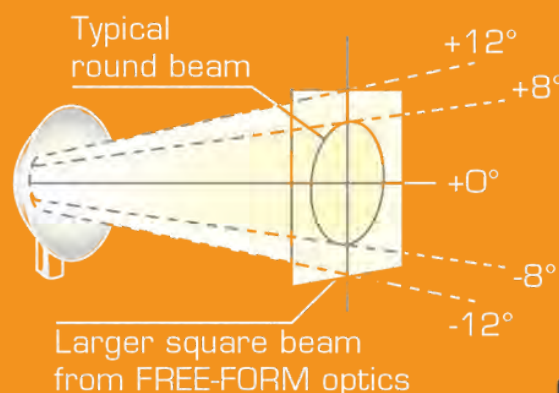
400200	Halogen - Magnetic Coloured Lens - Blue
--------	---

400300	Halogen - Magnetic Coloured Lens - Green
--------	--

400400	Halogen - Magnetic Coloured Lens - Red
--------	--

Free Form Optics

All MineBase beacon and lightbar ranges incorporate Free-form optical technology. This advancement in reflector design produces a more powerful and larger square beam increasing light output by 20%.



BEACONS - MINEBASE MIDI-VISION SERIES



Flexible Single Pole
Plug to DIN 72591

MINEBASE MIDI-VISION SERIES

- Free-form reflector provides 20% more light output than previous models.
- Whisper quiet rotators, running on stainless steel/acetal bearings.
- Polycarbonate lens provides high durability in harsh conditions.
- Multiple mounting configurations.
- Twist lock polycarbonate lens provides easy field maintenance.
- The magnetic model features 2600mm retractable coil with a cigar plug.
- Dual voltage motor.

Code	Description
404000	Halogen - Flexi Coloured Lens - Amber
404200	Halogen - Flexi Coloured Lens - Blue
404300	Halogen - Flexi Coloured Lens - Green
404400	Halogen - Flexi Coloured Lens - Red

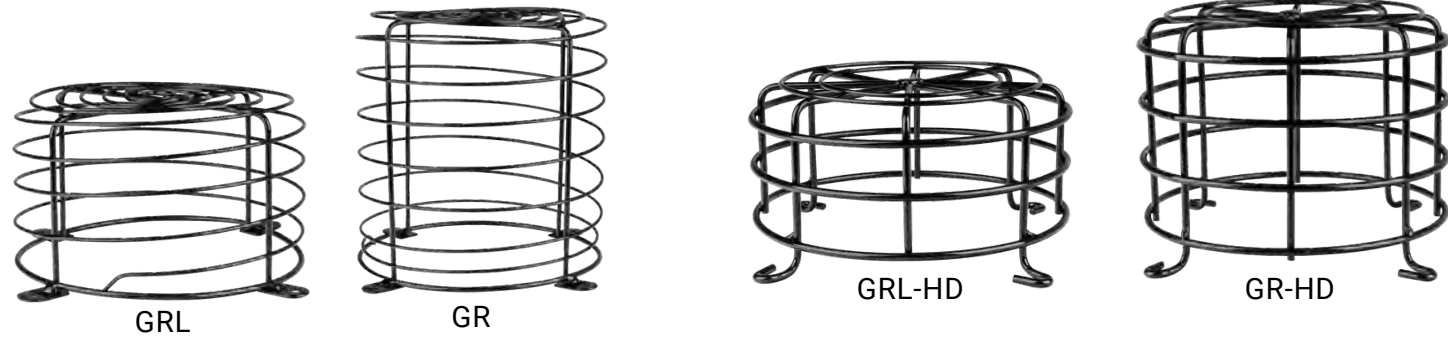
BEACONS - MINEBASE MIDI-VISION LENS

MIDI-VISION LENS ACCESSORY

Code	Description
910320	Amber
910321	Blue
910324	Red
910325	Green



BEACONS - ACCESSORIES



Code	Description	Max Height mm	Max Inside mm
GRL	Standard Duty	145	170
GR	Standard Duty	195	170
GRL-HD	Heavy Duty-5mm Cage	145	180
GR-HD	Heavy Duty-5mm Cage	195	180



Code	Description	Mount Style
1335001	Pole Mount/Integral DIN Socket	Bolt down - 2 bolt
1335002	Pole Mount/Integral DIN Socket	Weld
1335003	Pole Mount/Integral DIN Socket	Threaded
1335004	Pole Mount/Integral DIN Socket	Side mount - 2 bolt
1335005	Fold Down Pole Mount/Integral DIN Socket	Bolt down - 2 bolt



Code	Description	Mounting
905000	Beacon Adaptor Plate	Flat Surface
905001	Suits Midi Vision, 500 Series	90 Degrees
905002	Suits Midi Vision, 500 Series	90 Degrees
905003	Suits 103, 106 LED, Rotating LED	Flat Surface
905005	Suits Midi Vision, 500 Series	Flat Surface
905009	Suits 103, 106 LED, Rotating LED	90 Degrees
905011	Suits Protective Grilles	Flat Surface
A600VMK	Vacuum Magnetic Base and 4.6m lead suits 103, 106 LED, Rotating LED	Flat Surface

LED LIGHTING - MINEBASE MAXIVIEW 3 LED



OS-KRLED03B-A



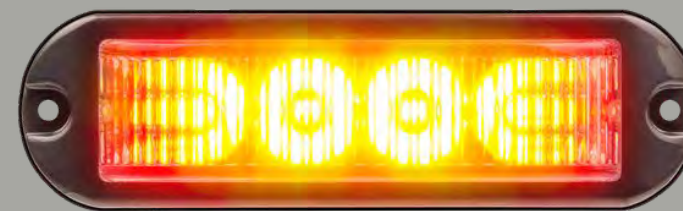
MINEBASE MAXIVIEW 3 LED

- Ultra-bright 3W LED versions.
- The optic design provides ultra-wide 180° light dispersion.
- High output LEDs.
- Up to 25 flash patterns.
- Dimming function.
- Aluminium base.
- LEDs rated to 100,000 hours of operation.
- Can be synchronised.
- 5 Year Warranty.

LED LIGHTING - MINEBASE MAXIVIEW 4 LED



OS-KRLED04B-AA



MINEBASE MAXIVIEW 4 LED

- Ultra-bright 3W LED versions.
- The optic design provides ultra-wide 180° light dispersion.
- High output LEDs.
- Up to 25 flash patterns.
- Dimming function.
- Aluminium base.
- LEDs rated to 100,000 hours of operation.
- Can be synchronised.
- 5 Year Warranty.

Code	Description
OS-KRLED03B-A	Maxiview-3 LED High Output - Amber
OS-KRLED03B-B	Maxiview-3 LED High Output - Blue
OS-KRLED03B-G	Maxiview-3 LED High Output - Green
OS-KRLED03B-R	Maxiview-3 LED High Output - Red
OS-KRLED03B-M	Maxiview-3 LED High Output - Magenta
OS-KRLED03B-W	Maxiview-3 LED High Output - White

Code	Description
OS-KRLED04B-AA	Maxiview-4 LED High Output - Amber
OS-KRLED04B-BB	Maxiview-4 LED High Output - Blue
OS-KRLED04B-GG	Maxiview-4 LED High Output - Green
OS-KRLED04B-RR	Maxiview-4 LED High Output - Red
OS-KRLED04B-MM	Maxiview-4 LED High Output - Magenta
OS-KRLED04B-WW	Maxiview-4 LED High Output - White
OS-KRLED04B-RB	Maxiview-4 LED High Output - Red/Blue

LED LIGHTING - MINEBASE SLIMLINE 4 LED



OS-KSLED04B-AA



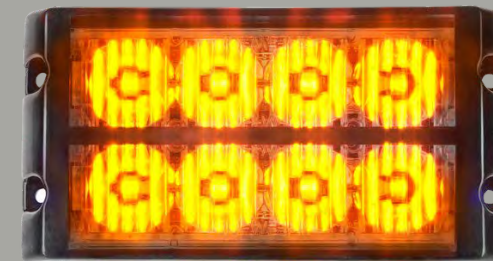
MINEBASE SLIMLINE 4 LED

- Ultra-bright 3W LED versions.
- Up to 25 flash patterns.
- Dimming function.
- Aluminium base.
- Epoxy-encapsulated electronics for environmental & vibration protection.
- LEDs rated to 100,000 hours of operation.
- Can be synchronised.
- 5 Year Warranty.

LED LIGHTING - MINEBASE SLIMLINE DUAL



OS-KSLED24B-AA



MINEBASE SLIMLINE DUAL 4 LED

- Ultra-bright 3W LED versions.
- Up to 25 flash patterns.
- Dimming function.
- Aluminium base.
- Epoxy-encapsulated electronics for environmental & vibration protection.
- LEDs rated to 100,000 hours of operation.
- Can be synchronised.
- 5 Year Warranty.

Code	Description
OS-KSLED04B-AA	Slimline-4 LED High Output - Amber
OS-KSLED04B-BB	Slimline-4 LED High Output - Blue
OS-KSLED04B-RR	Slimline-4 LED High Output - Red
OS-KSLED04B-WW	Slimline-4 LED High Output - White
OS-KSLED04B-RB	Slimline-4 LED High Output - Red/Blue

Code	Description
OS-KSLED24B-AA	Slimline Dual-4 LED High Output - Amber
OS-KSLED24B-BB	Slimline Dual 4 LED High Output - Blue
OS-KSLED24B-RR	Slimline Dual-4 LED High Output - Red
OS-KSLED24B-WW	Slimline Dual-4 LED High Output - White
OS-KSLED24B-RB	Slimline Dual-4 LED High Output - Red/Blue
OS-KSLED24B-WA	Slimline Dual-4 LED High Output - White/Amber

LED LIGHTING - MINEBASE SLIMLINE 6 LED

LED LIGHTING - MINEBASE SLIMLINE DUAL



OS-KSLED04B-AA

MINEBASE SLIMLINE 6 LED

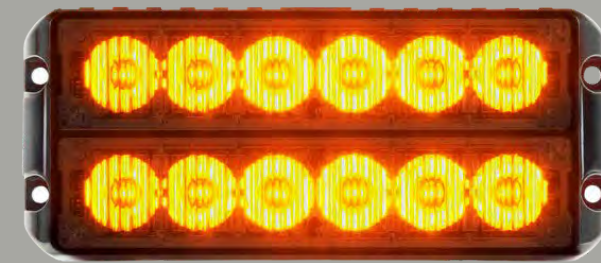
- Ultra Bright 3W LED Versions.
- Up to 25 Flash Patterns.
- Dimming Function.
- Aluminium Base.
- Epoxy Encapsulated Electronics for Environmental & Vibration Protection.
- LEDs rated to 100,000 hours of operation.
- Can be Synchronised.
- 5 Year Warranty.



OS-KSLED26B-AA

MINEBASE SLIMLINE DUAL 6 LED

- Ultra-bright 3W LED versions.
- Up to 25 flash patterns.
- Dimming function.
- Aluminium base.
- Epoxy-encapsulated electronics for environmental & vibration protection.
- LEDs rated to 100,000 hours of operation.
- Can be synchronised.
- 5 Year Warranty.



Code	Description
OS-KSLED06B-AA	Slimline-6 LED High Output - Amber
OS-KSLED06B-BB	Slimline-6 LED High Output - Blue
OS-KSLED06B-RR	Slimline-6 LED High Output - Red
OS-KSLED06B-WW	Slimline-6 LED High Output - White
OS-KSLED06B-RB	Slimline-6 LED High Output - Red/Blue

Code	Description
OS-KSLED26B-AA	Slimline Dual-4 LED High Output - Amber
OS-KSLED26B-RB	Slimline Dual-4 LED High Output - Red/Blue
OS-KSLED26B-RR	Slimline Dual-4 LED High Output - Red
OS-KSLED26B-WW	Slimline Dual-4 LED High Output - White

LED LIGHTING - MINEBASE COVERT

MINEBASE COVERT - 8 LED

- Suction cups for quick and easy windscreen mounting.
- Up to 30 flash patterns.
- Dimming function.
- User controls on the rear of the unit - reset, dimming, flash select.
- LEDs rated to 100,000 hours of operation.
- 2800mm lead to cigar plug.
- Permanent bolt-down mounting option.
- Low current draw.
- 5 Year Warranty.

LSDL-42TEAA



Code

Description

LSDL-42TEAA	Covert Series - 8 LED - Amber
LSDL-42TERB	Covert Series - 8 LED - Red/Blue
LSDL-42TEAR	Covert Series - 8 LED - Amber/Red
LSDL-42TEAW	Covert Series - 8 LED - Amber/White

LED LIGHTING - MINEBASE HIDE-AWAY

MINEBASE HIDE-AWAY

- Can be panel or surface mounted.
- 6 LEDs per light module.
- Up to 22 flash patterns.
- Aluminium base.
- Epoxy encapsulated electronics for enhanced moisture and vibration protection.
- Can be synchronised.
- Multi-voltage.
- 5 Year Warranty.



LSHA01-AA Illuminated



Code

Description

LSHA01-AA	LED Hide-Away Series - Amber
LSHA01-BB	LED Hide-Away Series - Blue
LSHA01-MM	LED Hide-Away Series - Magenta
LSHA01-RR	LED Hide-Away Series - Red
LSHA01-RB	LED Hide-Away Series - Red/Blue
LSHA01-WW	LED Hide-Away Series - White

LED LIGHTING - MINEBASE PORTABLE MARKER

MINEBASE PORTABLE MARKER



KLED/MKR-A

- Features high performance AGM battery.
- Up to 28 hours of continuous use.
- Selectable high/low output.
- Includes 240V smart charger - won't overcharge.
- Ultra bright 3W superslim LEDs.
- Supplied with a carry case.
- Quick and easy setup.

Code	Description
KLED/MKR-A	4 LED Portable Marker - Single Sided - Amber
KLED/MKR-RB	4 LED Portable Marker - Single Sided - Red/Blue
KLED/MKR-AA	4 LED Portable Marker - Double Sided - Amber
KLED/MKR-RBRB	4 LED Portable Marker - Double Sided - Red/Blue
KLED/MKR-23A	6 LED Portable Marker - Single Sided - Amber
KLED/MKR-23RB	6 LED Portable Marker - Single Sided - Red/Blue

LED LIGHTING - LED NANO-BAR



LSQ-0110



LSQ-0110-M

MINEBASE LED NANO-BAR

- One of the smallest LED lightbars on the market - 165mm long.
- Up to 14 flash patterns.
- Latest high output LED technology.
- Robust housing and lens.
- Environmentally sealed LED modules - IP67.
- Can be synchronised.
- Multi-voltage.
- 5 Year Warranty.

Code	Description	Code	Description
LSQ-0110	LED - 4 Bolt - Amber	LSQ-0110-M	LED - Magnetic - Amber
LSQ-0330	LED - 4 Bolt - Blue	LSQ-0330-M	LED - Magnetic - Blue
LSQ-0440	LED - 4 Bolt - Green	LSQ-0440-M	LED - Magnetic - Green
LSQ-0550	LED - 4 Bolt - Red	LSQ-0550-M	LED - Magnetic - Red
LSQ-0660	LED - 4 Bolt - Magenta	LSQ-0660-M	LED - Magnetic - Magenta
LSQ-0770	LED - 4 Bolt - Red/Blue	LSQ-0770-M	LED - Magnetic - Red/Blue

LED LIGHTING - BRACKETS



Code	Description
KRLED03B-BKT	Maxiview Bracket - 3 LED
KRLED04B-BKT	Maxiview Bracket - 4 LED
KSLED04B-BKT	Slimline Bracket - 4 LED
KSLED06B-BKT	Slimline Bracket - 6 LED
KSLED08B-BKT	Slimline Bracket - 8 LED

NINJA BEACON



Code	Description
BE325A-PO	Portable Magnetic - NINJA Beacon
BE325A-PL	Pole Mount - NINJA Beacon
BE325A-MG	Magnetic - NINJA Beacon
BE325A-ST	Stud Mount - NINJA Beacon

MINEBASE MINEBARS SERIES

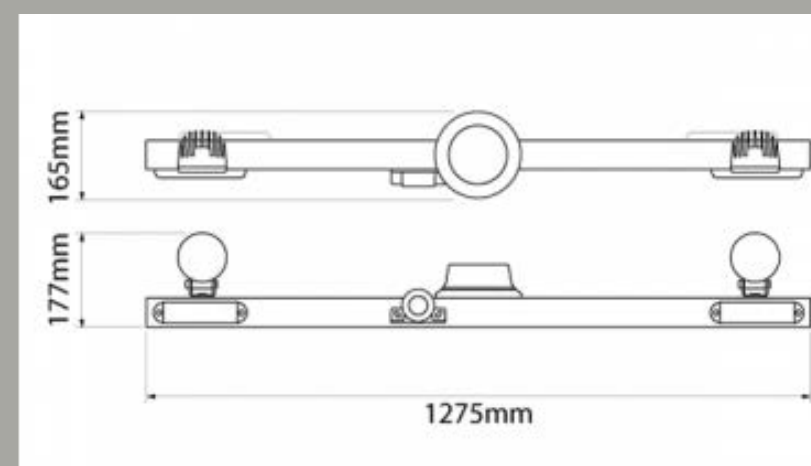


MINEBASE MINEBARS FEATURES

- Featuring all premium products including the MineBase Low Profile 103 LED Beacon, Nordic Canis Go 410 Worklamp and the Brigade tonal and bbs-tek reversing alarms.
- Models are also available with forward-facing turn signal LEDs.
- All Minebars are equipped with ADR approved MineBase LED combination lamps - stop, tail, indicator & reverse lamps.
- Extruded aluminium bar provides greater strength and adaptability.
- Stepped edge allows for the use of Rhino-Rack mounting kits.
- Multi-voltage.

MINEBARS - MINEBASE MINEBARS 1275MM

MINEBASE MINEBARS - 1275MM



Mounting channel runs entire length of bar allowing virtually unlimited mounting options.

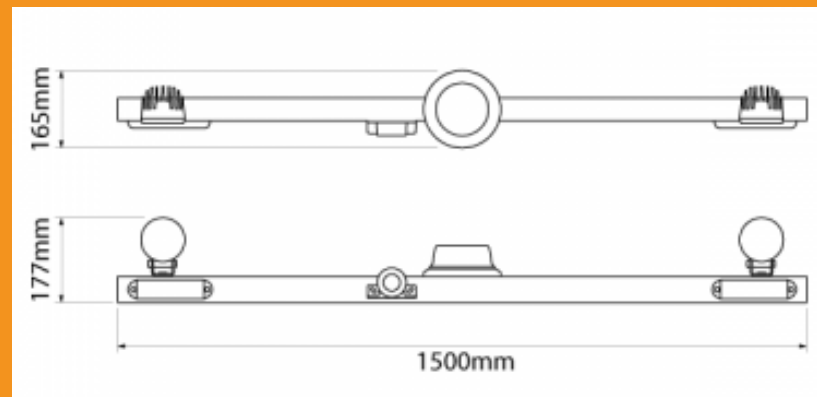


Code	Alarm type	Sound level dB(A)@1m	Worklamps	Forward facing turn signal LEDs
21005AF	Tonal	97	Nordic Canis GO 410	Included



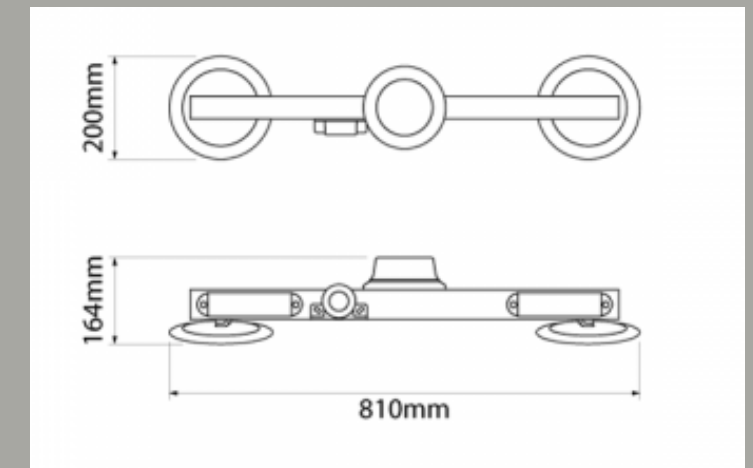
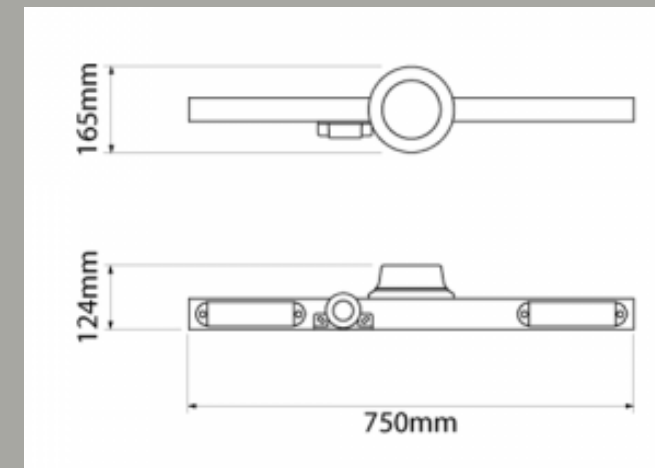
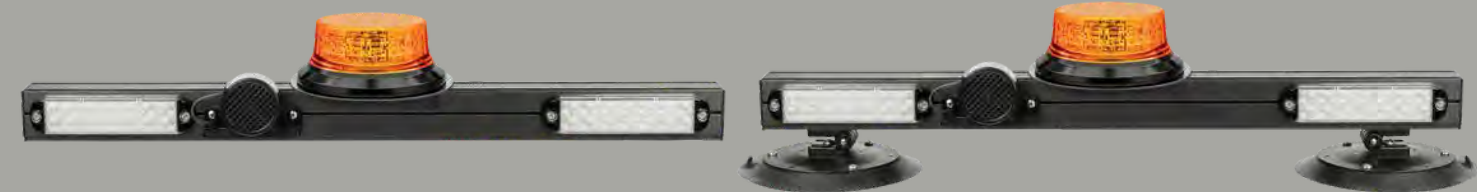
MINEBARS - MINEBASE MINEBARS 1500MM

MINEBASE MINEBARS - 1500MM



MINEBARS - MINEBASE MINEBARS 750MM

MINEBASE MINEBARS - 750MM



Code	Alarm type	Sound level dB(A)@1m	Worklamps
31005A	Tonal	97	Nordic Canis GO 410

Code	Alarm type	Sound level dB(A)@1m	Mount type
1103A	Tonal	97	2 Bolt
1104A	Tonal	97	Magnetic



DID YOU KNOW?

All of our MineBase Minebars are designed and manufactured right here in Australia!
We use high-quality components to increase the life of our Minebars. They're built tough for the extreme Australian weather!

MINEBARS - MINEBASE MINEBARS SPECIALS

MINEBASE MINEBARS - 1275MM SPECIALS



20003A



20006A



22003A

Code	Alarm type	Voltage	Beacon type	Sound level dB(A)@1m
20003A	Tonal	12	Halogen Rotating	97
20006A	Tonal	12-24	LED Rotating	97
22003A	Tonal	12-24	LED Micro-Bar	97

Mix and match!

We can customise your minebar to suit your specific requirements.



WORKLAMPS

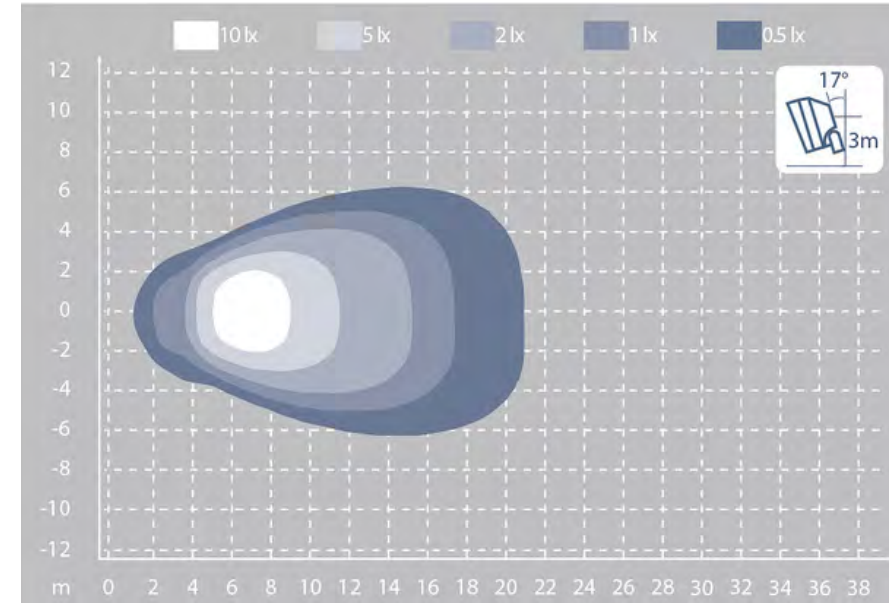


HEAVY DUTY SERIES - SPICA LED N26



SPICA LED N26

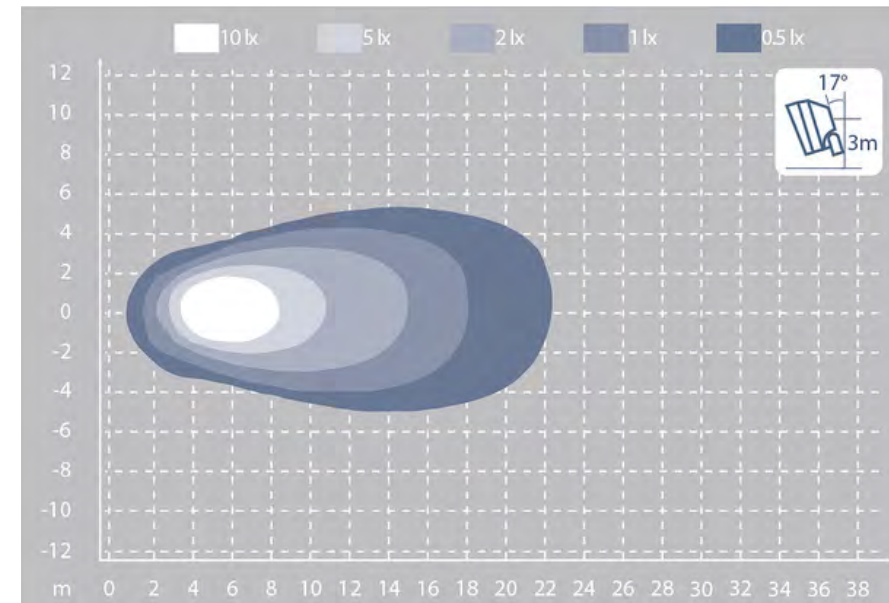
- Extensive multi-voltage.
- Long-life LEDs.
- Low current draw.
- Overvoltage, over temperature, spike and polarity protected.
- Environmentally sealed cast alloy body.
- Heavy-duty mount.
- Replaceable lens.
- Rotate lens for pendant or side mount.
- Deutsch DT connector encapsulated in body.
- 5 Year Warranty.



SPICA LED N26 - Wide Flood

Code: 981-201

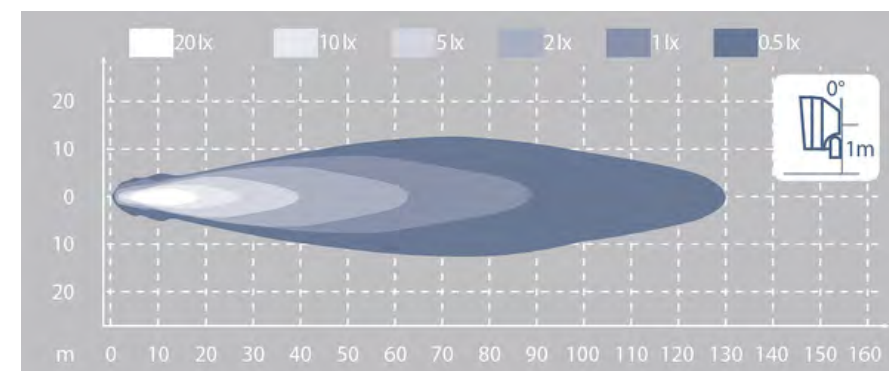
Operational Voltage: 9-110



SPICA LED N26 - Flood

Code: 981-202

Operational Voltage: 9-110



SPICA LED N26 - Spot

Code: 981-203

Operational Voltage: 9-110

Code	Description
981-201	SPICA LED N26 - Wide Flood
981-202	SPICA LED N26 - Flood
981-203	SPICA LED N26 - Spot

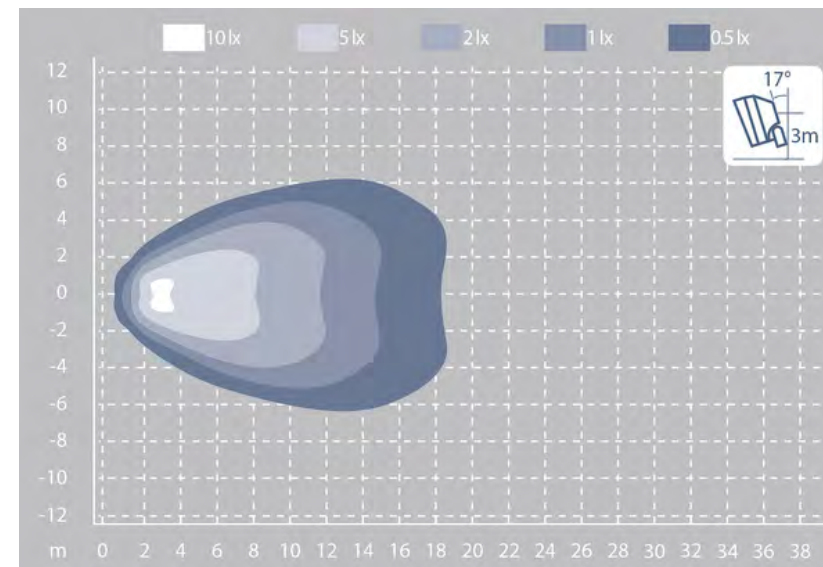
HEAVY DUTY SERIES - SCORPIUS LED N42



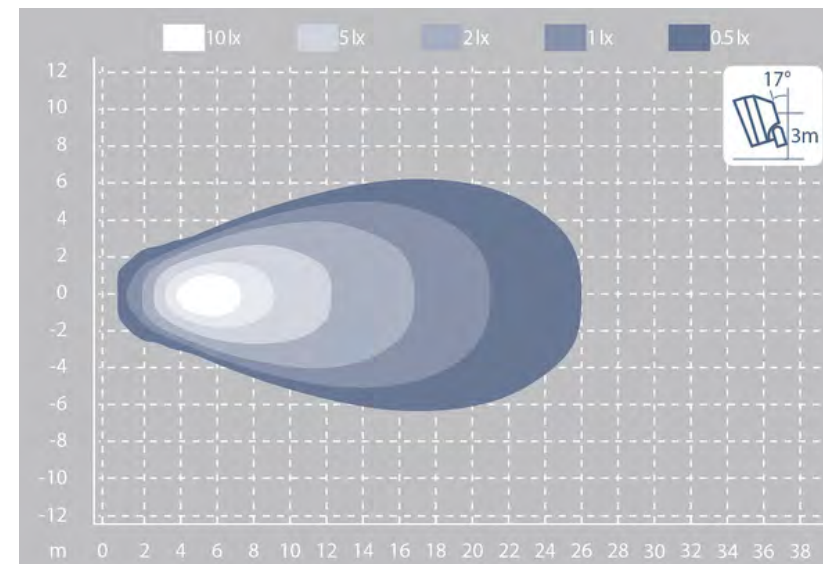
SCORPIUS LED N42

- Multi-voltage.
- Long-life LEDs.
- Overvoltage, over temperature, spike and polarity protected.
- Environmentally sealed cast alloy body.
- Extreme shock resistance.
- Heavy-duty mounting system.
- Replaceable lens.
- Rotate lens for pendant or side mount.
- Deutsch DT connector encapsulated in body.
- 5 Year Warranty.

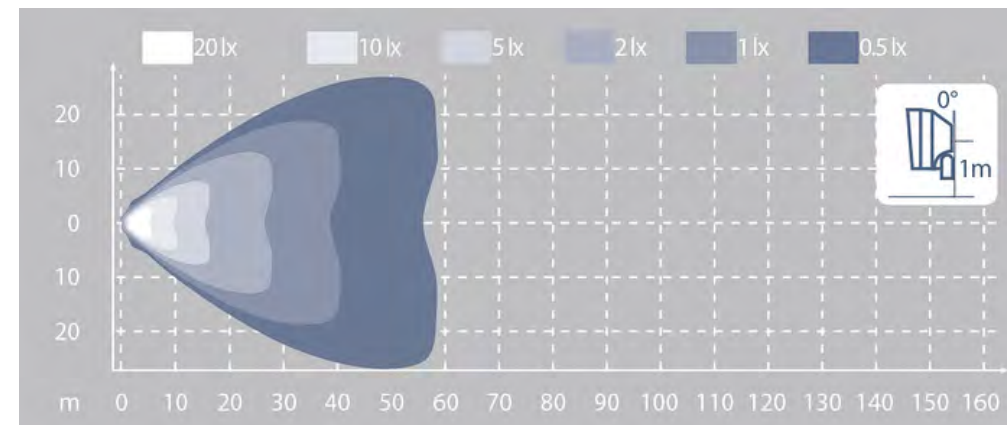
Code	Description
984-201	SCORPIUS LED N42 - Wide Flood
984-202	SCORPIUS LED N42 - Flood
984-203	SCORPIUS LED N42 - Low Beam
984-204	SCORPIUS LED N42 - High Beam



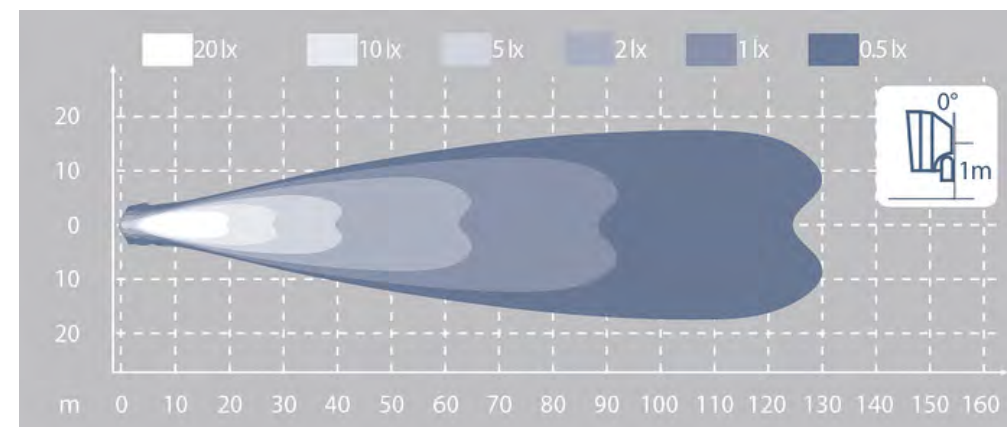
SCORPIUS LED N42 - Wide Flood
Code: 984-201
Operational Voltage: 9-32



SCORPIUS LED N42 - Flood
Code: 984-202
Operational Voltage: 9-32



SCORPIUS LED N42 - Low Beam
Code: 984-203
Operational Voltage: 9-32



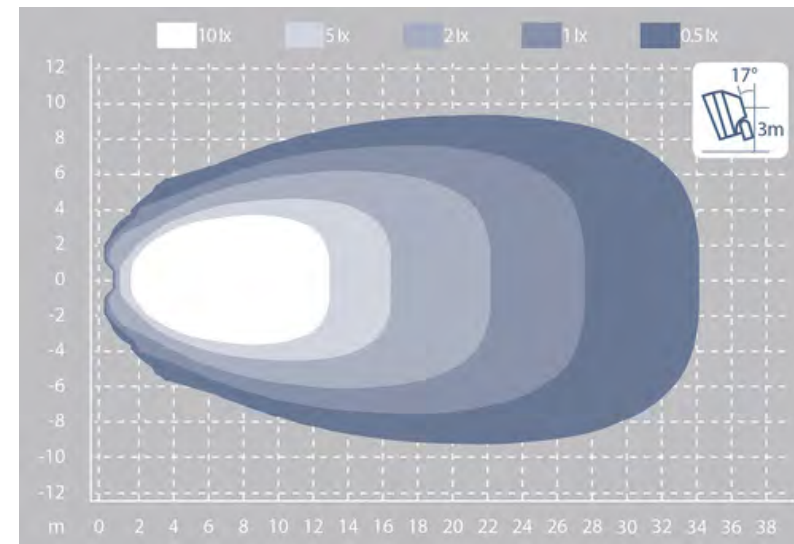
SCORPIUS LED N42 - High Beam
Code: 984-204
Operational Voltage: 9-32

HEAVY DUTY SERIES - SCORPIUS PRO LED N445

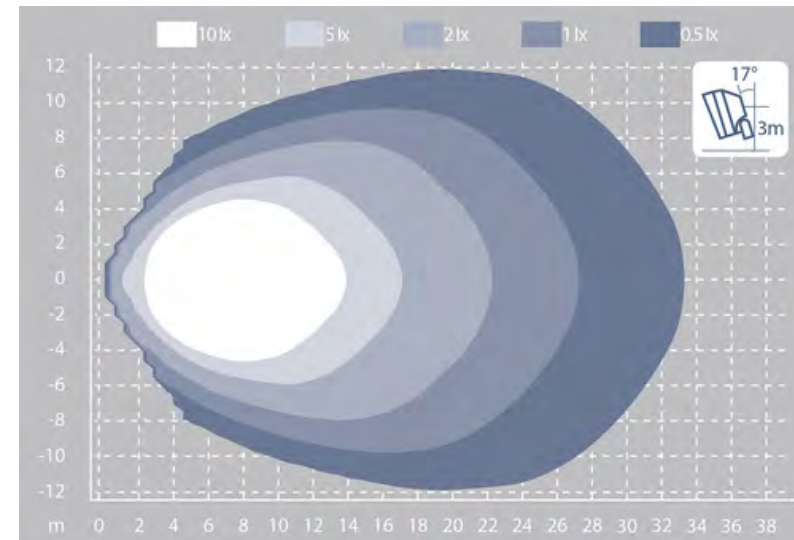


SCORPIUS PRO LED N445

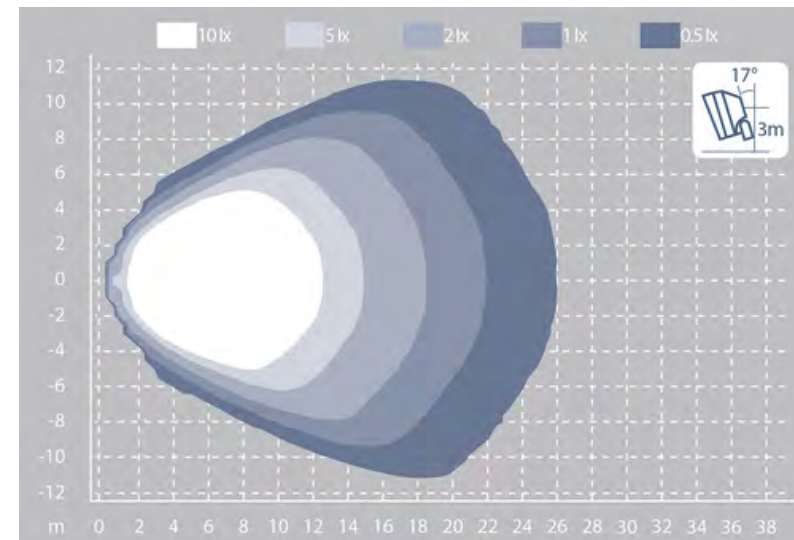
- Grilamid lens for exceptional heat resistance.
- Superior electromagnetic compatibility.
- Latest high output LED technology.
- Overvoltage, over temperature, spike and polarity protected.
- Environmentally sealed cast alloy body.
- Extreme shock resistance.
- Heavy-duty mounting system.
- Replaceable lens.
- Rotate lens for pendant or side mount.
- Deutsch DT connector encapsulated in body.
- 5 Year Warranty.



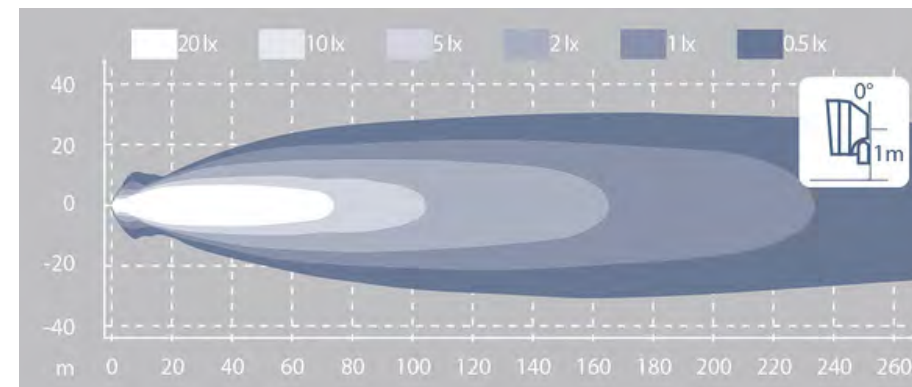
SCORPIUS PRO LED N445 - Flood
Code: 984-701
Operational Voltage: 9-32



SCORPIUS PRO LED N445 - Ultra Wide Flood
Code: 984-702
Operational Voltage: 9-32



SCORPIUS PRO LED N445 - Wide Flood
Code: 984-703
Operational Voltage: 9-32



SCORPIUS PRO LED N445 - Spot
Code: 984-704
Operational Voltage: 9-32

Code	Description
984-701	SCORPIUS PRO LED N445 - Flood
984-702	SCORPIUS PRO LED N445 - Ultra Wide Flood
984-703	SCORPIUS PRO LED N445 - Wide Flood
984-704	SCORPIUS PRO LED N445 - Spot

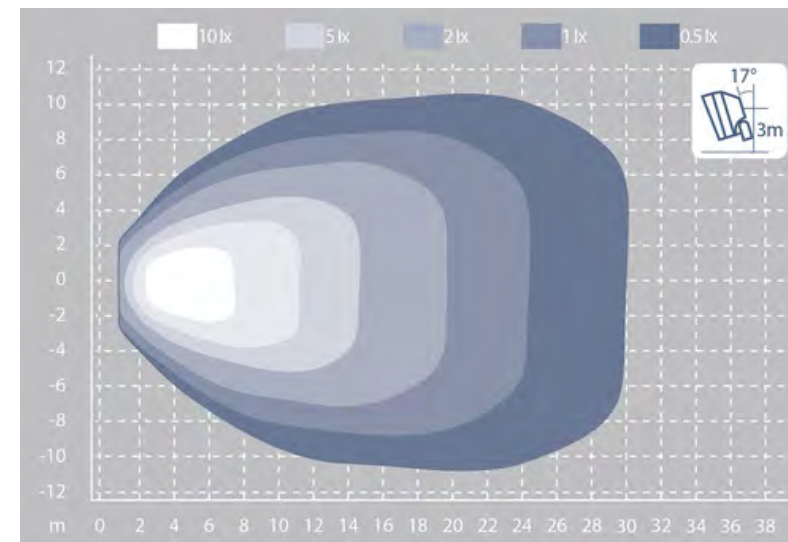
HEAVY DUTY SERIES - CENTAURUS LED N460



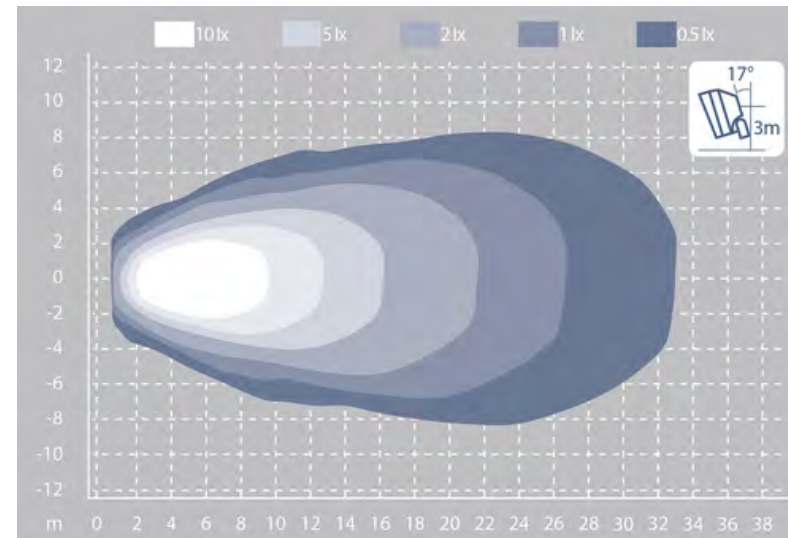
CENTAURUS LED N460

- Multi-voltage.
- Long-life LEDs.
- Overvoltage, over temperature, spike and polarity protected.
- Environmentally sealed cast alloy body.
- Extreme shock resistance.
- Heavy-duty anti-vibration mounting system.
- Replaceable lens.
- Rotate lens for pendant mount.
- Deutsch DT connector encapsulated in body.
- 5 Year Warranty.

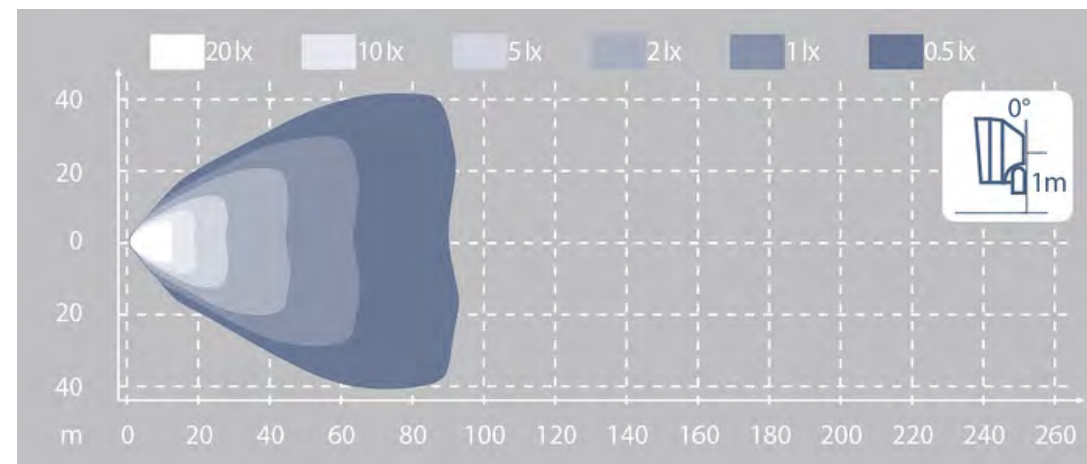
Code	Description
986-001	CENTAURUS LED N460 - Wide Flood
986-002	CENTAURUS LED N460 - Flood
986-003	CENTAURUS LED N460 - Low Beam
986-004	CENTAURUS LED N460 - High Beam



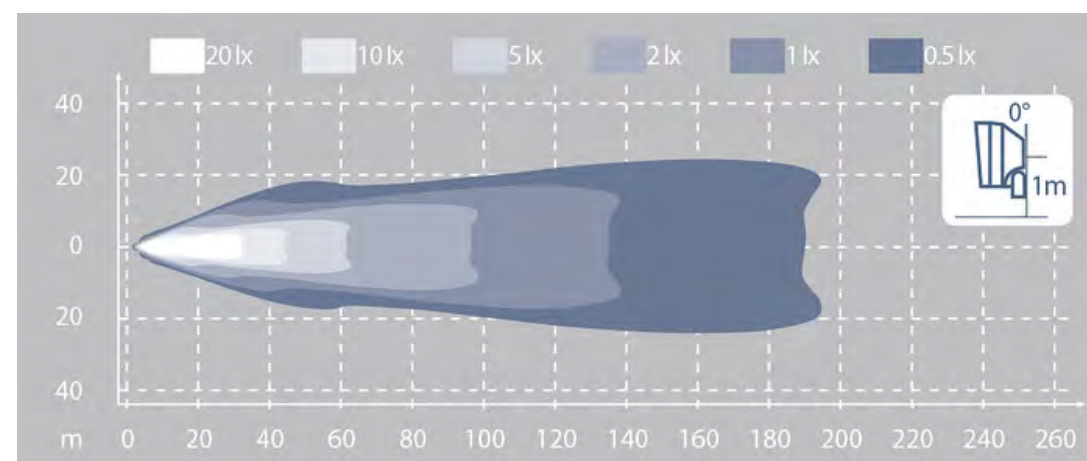
CENTAURUS LED N460 - Wide Flood
Code: 986-001
Operational Voltage: 18-32



CENTAURUS LED N460 - Flood
Code: 986-002
Operational Voltage: 18-32



CENTAURUS LED N460 - Low Beam
Code: 986-003
Operational Voltage: 18-32



CENTAURUS LED N460 - High Beam
Code: 986-004
Operational Voltage: 18-32



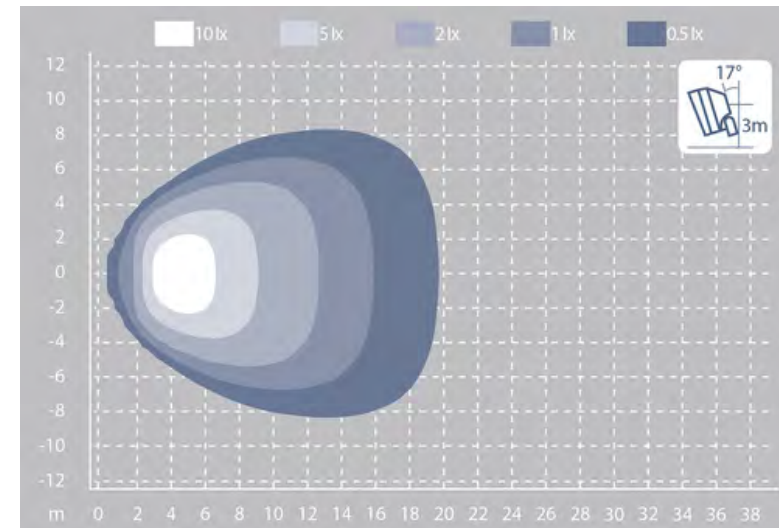
HEAVY DUTY SERIES - CANIS LED N2001



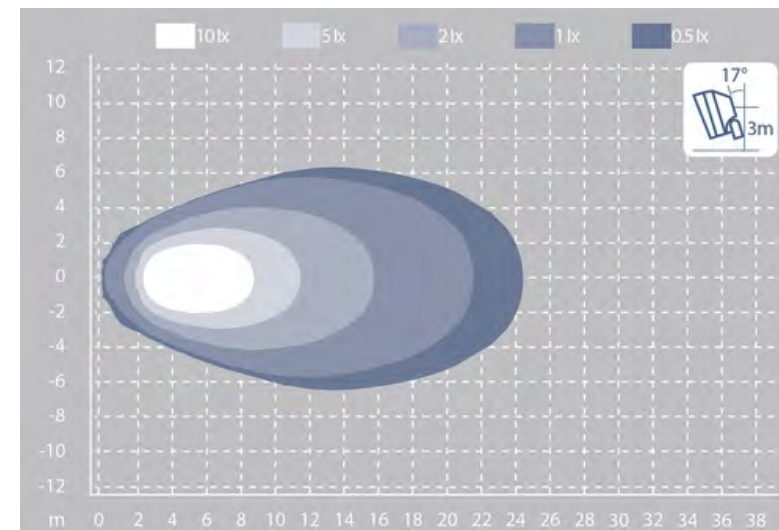
CANIS LED N2001

- Ultra-compact and lightweight.
- Next-generation LED's provide even greater light output.
- Multi-voltage.
- Long-life LED.
- Extreme shock resistance.
- Overvoltage, over temperature, spike and polarity protected.
- Environmentally sealed cast alloy body.
- Deutsch DT connector encapsulated in body.
- 5 Year Warranty.

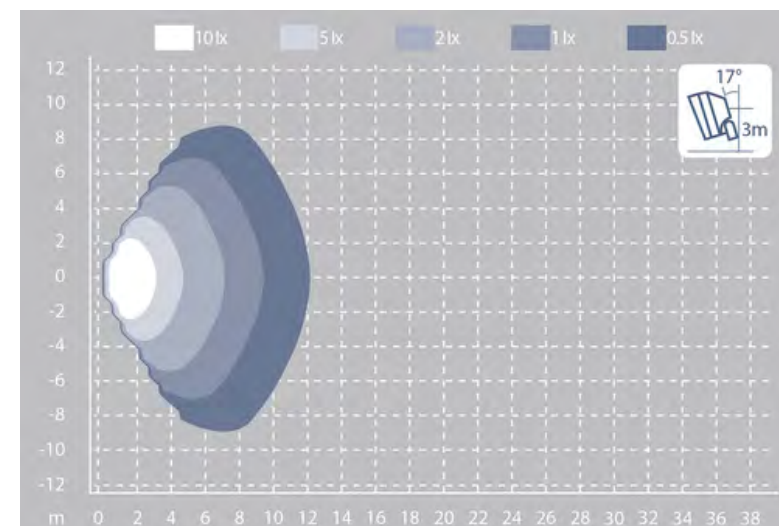
Code	Description
980-101	CANIS LED N2001 - Wide Flood
980-102	CANIS LED N2001 - Flood
980-104	CANIS LED N2001 - Spot



CANIS LED N2001 - Wide Flood
Code: 980-101
Operational Voltage: 9-68



CANIS LED N2001 - Flood
Code: 980-102
Operational Voltage: 9-68



CANIS LED N2001 - Spot
Code: 980-104
Operational Voltage: 9-68

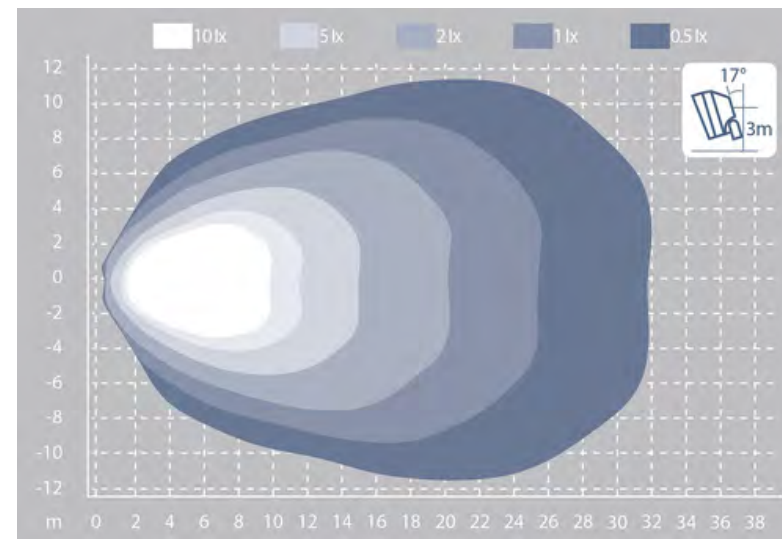
HEAVY DUTY SERIES - SCORPIUS LED N4402



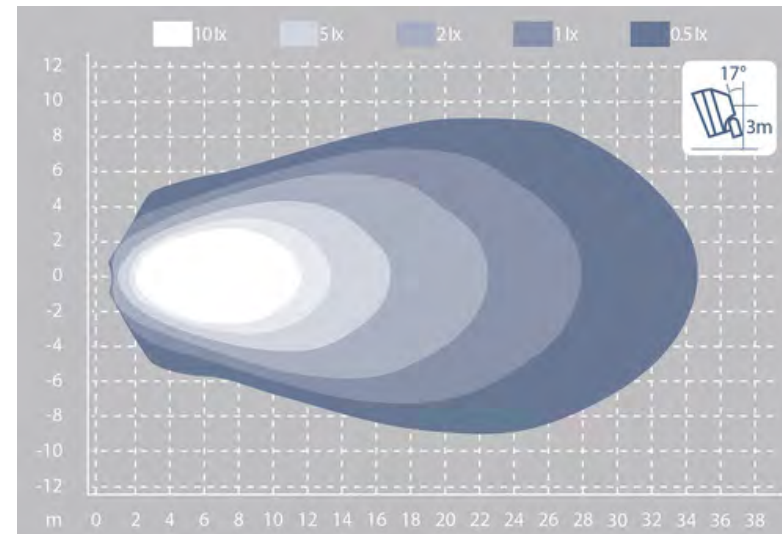
SCORPIUS LED N4402

- Multi-voltage.
- Long-life LEDs.
- Extreme shock resistance.
- Overvoltage, over temperature, spike and polarity protected.
- Environmentally sealed cast alloy body.
- Replaceable lens.
- Rotate lens for pendant mount.
- Heavy-duty mounting system.
- Deutsch DT connector encapsulated in body.
- 5 Year Warranty.

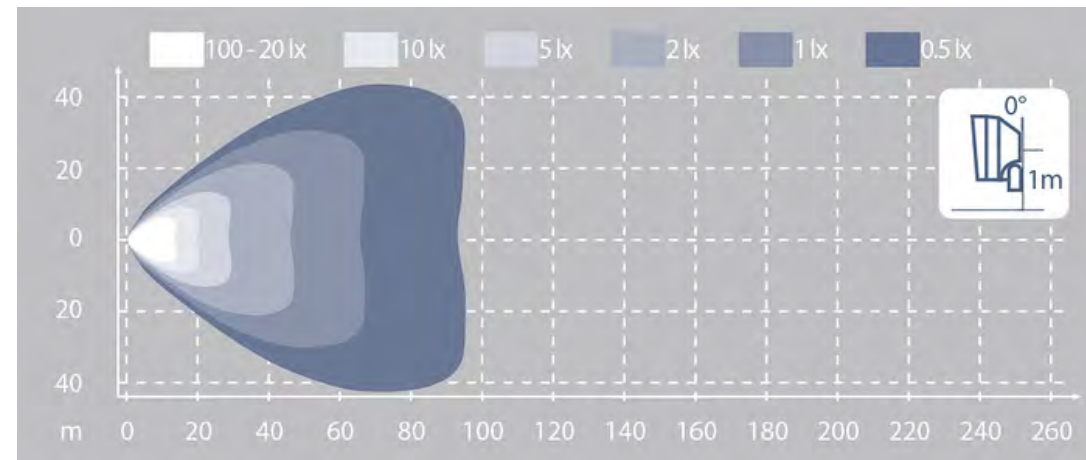
Code	Description
984-101	SCORPIUS LED N4402 - Wide Flood
984-102	SCORPIUS LED N4402 - Flood
984-103	SCORPIUS LED N4402 - Low Beam
984-104	SCORPIUS LED N4402 - High Beam



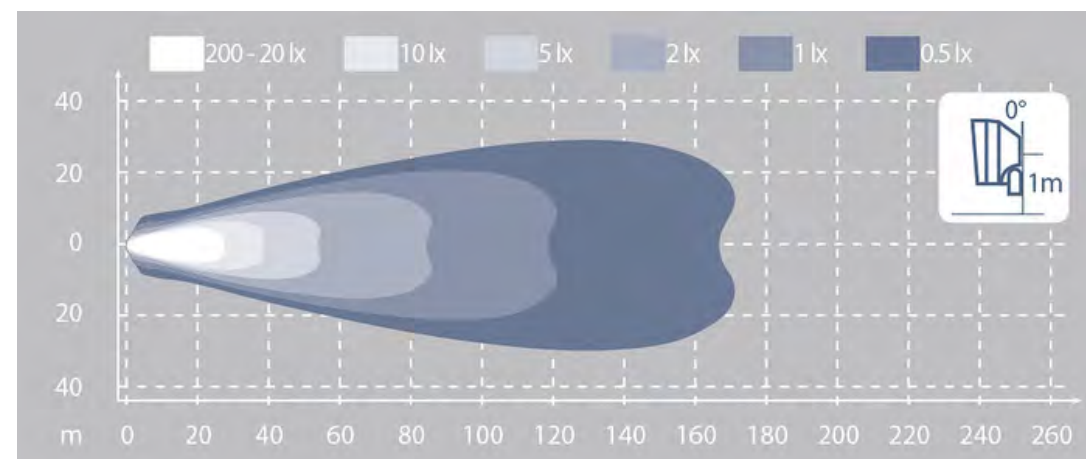
SCORPIUS LED N4402 - Wide Flood
Code: 984-101
Operational Voltage: 9-32



SCORPIUS LED N4402 - Flood
Code: 984-102
Operational Voltage: 9-32



SCORPIUS LED N4402 - Low Beam
Code: 984-103
Operational Voltage: 9-32



SCORPIUS LED N4402 - High Beam
Code: 984-104
Operational Voltage: 9-32

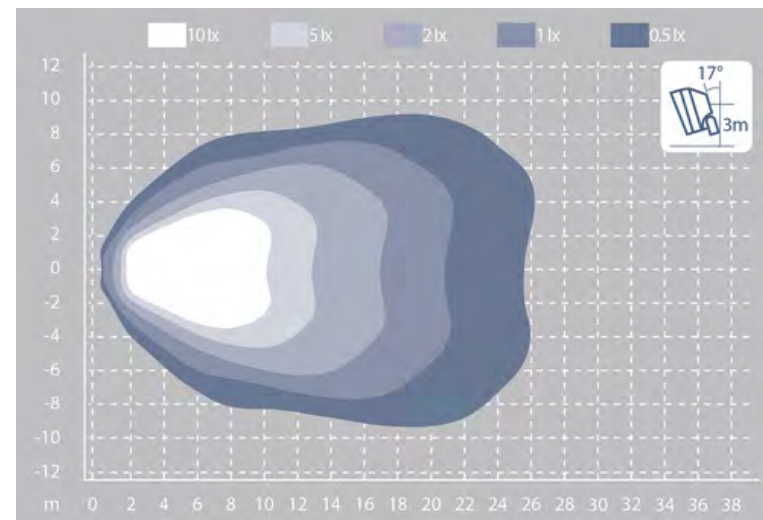
HEAVY DUTY SERIES - SCORPIUS LED N4406



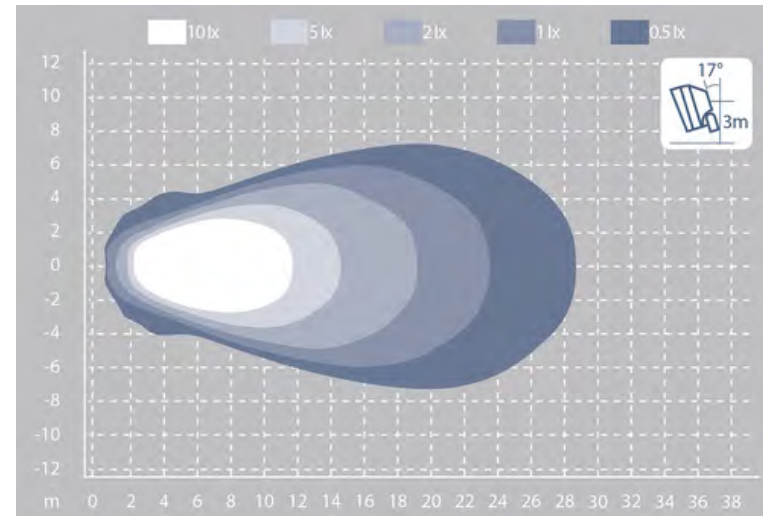
SCORPIUS LED N4406

- Multi-voltage.
- Long-life LEDs.
- Extreme shock resistance.
- Overvoltage, over temperature, spike and polarity protected.
- Environmentally sealed cast alloy body.
- Replaceable lens.
- Rotate lens for pendant mount.
- Heavy-duty mounting system.
- Deutsch DT connector encapsulated in body.
- 5 Year Warranty.

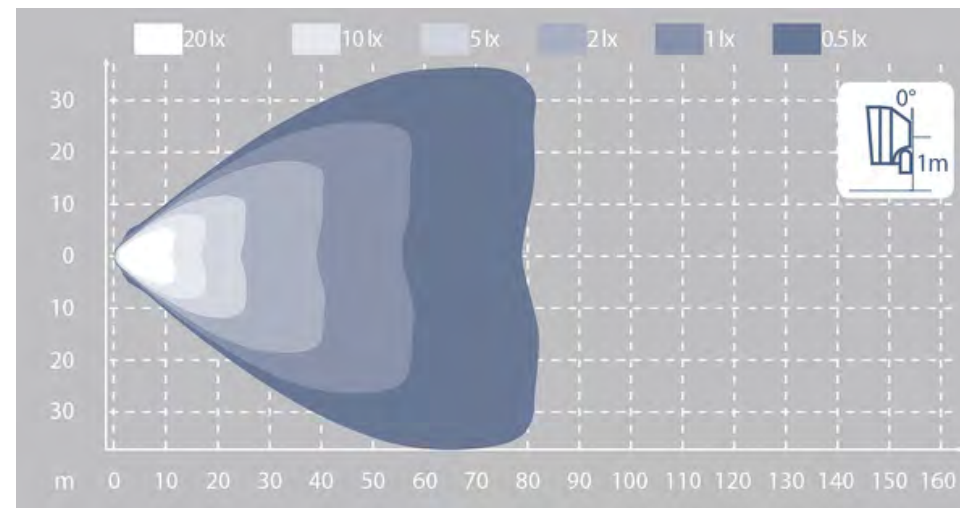
Code	Description
984-036	SCORPIUS LED N4406 - Wide Flood
984-037	SCORPIUS LED N4406 - Flood
984-038	SCORPIUS LED N4406 - Low Beam
984-039	SCORPIUS LED N4406 - High Beam



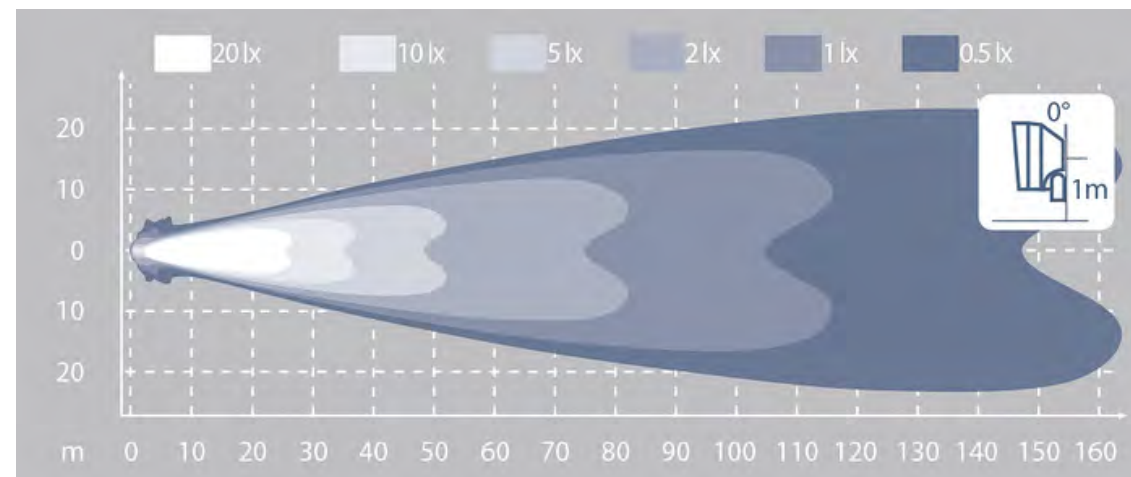
SCORPIUS LED N4406 - Wide Flood
Code: 984-036
Operational Voltage: 9-32



SCORPIUS LED N4406 - Flood
Code: 984-037
Operational Voltage: 9-32



SCORPIUS LED N4406 - Low Beam
Code: 984-038
Operational Voltage: 9-32



SCORPIUS LED N4406 - High Beam
Code: 984-039
Operational Voltage: 9-32

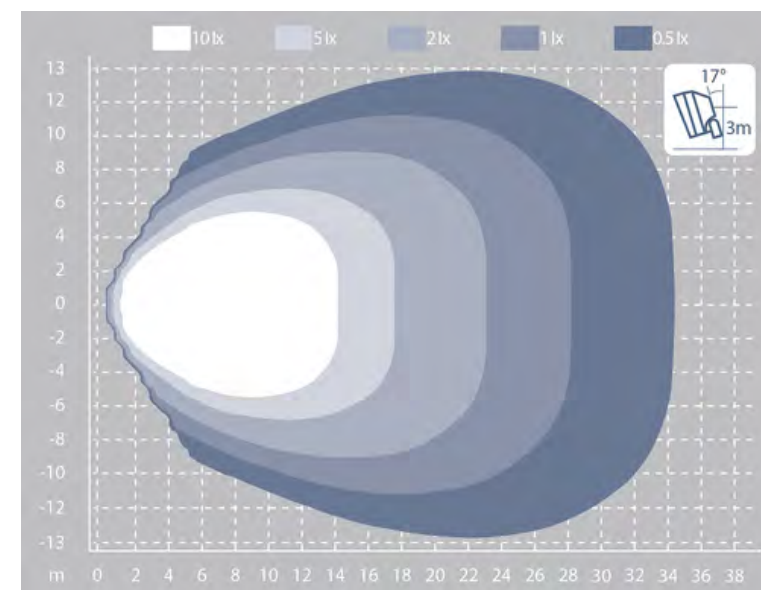
HEAVY DUTY SERIES - CENTAURUS LED N4601



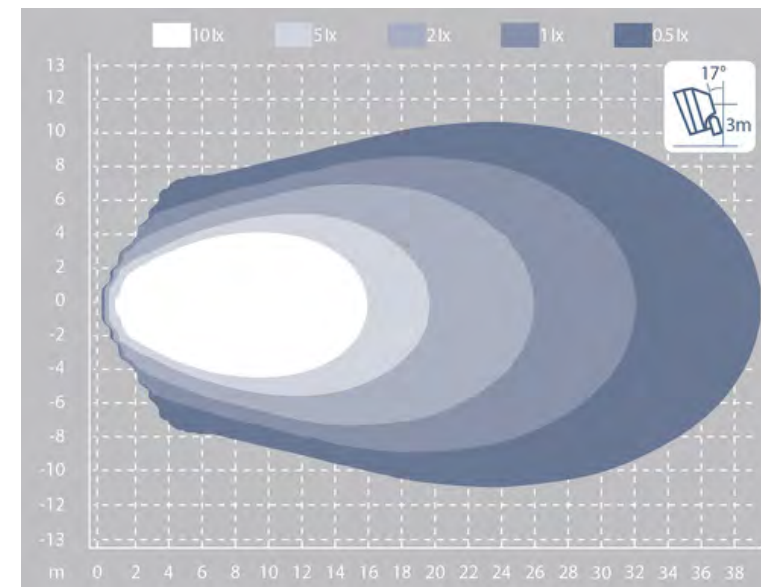
CENTAURUS LED N4601

- Superior illumination - 11,500lm.
- Heavy-duty QUAKE anti-vibration mounting system.
- Multi-voltage.
- Long-life LEDs.
- Extreme shock resistance.
- Overvoltage, over temperature, spike and polarity protected.
- Environmentally sealed cast alloy body.
- Deutsch DT connector encapsulated in body.
- 5 Year Warranty.

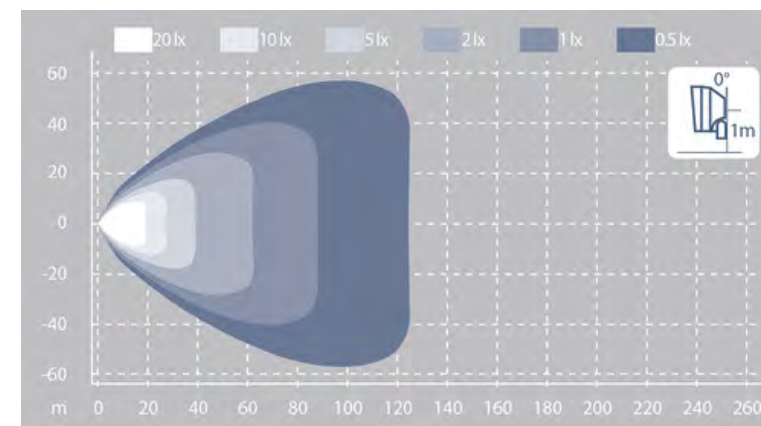
Code	Description
986-101	CENTAURUS LED N4601 - Wide Flood
986-102	CENTAURUS LED N4601 - Flood
986-103	CENTAURUS LED N4601 - Low Beam
986-104	CENTAURUS LED N4601 - Spot



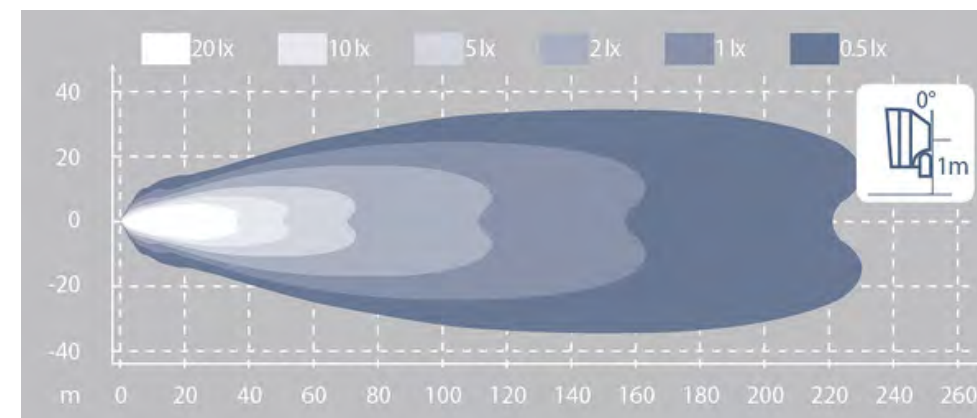
CENTAURUS LED N4601 - Wide Flood
Code: 986-101
Operational Voltage: 18-32



CENTAURUS LED N4601 - Flood
Code: 986-102
Operational Voltage: 18-32



CENTAURUS LED N4601 - Low Beam
Code: 986-103
Operational Voltage: 18-32



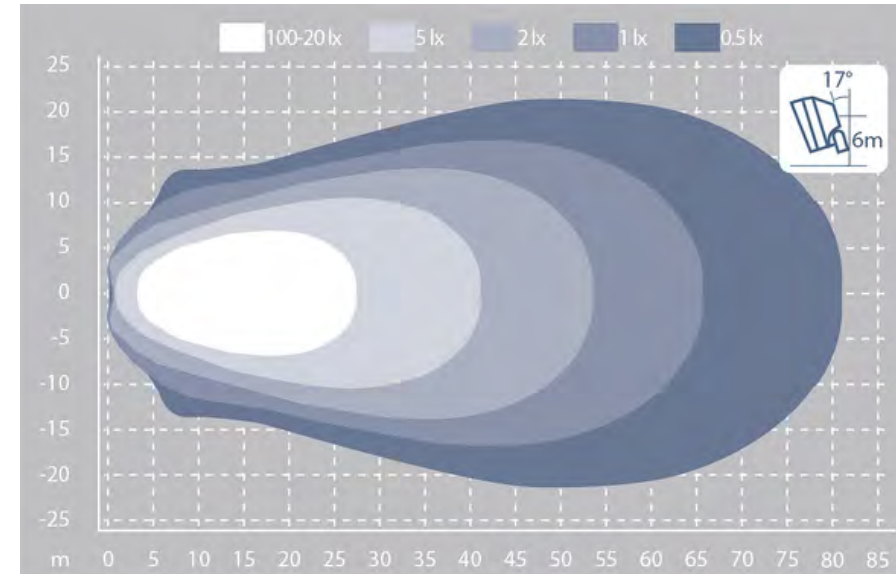
CENTAURUS LED N4601 - Spot
Code: 986-104
Operational Voltage: 18-32

HEAVY DUTY SERIES - GEMINI LED N4701

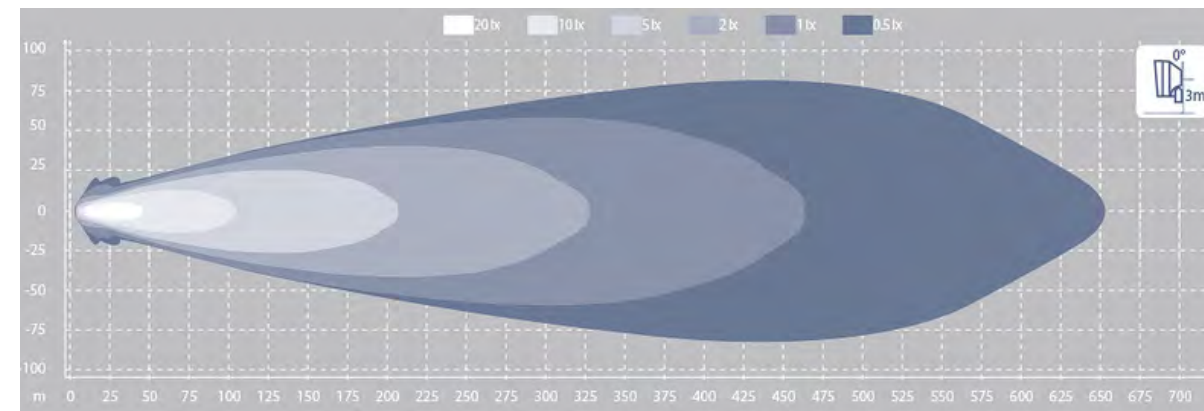


GEMINI LED N4701

- Ultimate illumination - 40,300lm.
- Long-life LEDs.
- Overvoltage, over temperature, spike and polarity protected.
- Environmentally sealed cast alloy body.
- Replaceable lens.
- Individual connector for upper and lower lamps.
- Deutsch DT connector encapsulated in body.
- 5 Year Warranty.



Gemini LED N4701 - Flood
Code: 984-401
Operational Voltage: 24



Gemini LED N4701 - Spot
Code: 984-402
Operational Voltage: 24

Code	Description
984-401	Gemini LED N4701 - Flood
984-402	Gemini LED N4701 - Spot



GENERAL PURPOSE SERIES - CANIS GO 410



CANIS GO 410

- Cost-effective, high-quality worklamp.
- Compact design.
- Multi-voltage.
- Long-life LEDs.
- Low current draw.
- Overvoltage, over temperature, spike & polarity protected.
- Environmentally sealed cast alloy body.
- Extreme shock resistance.
- Even light pattern without hotspots.
- Deutsch DT connector encapsulated in body.
- 5 Year Warranty.

GENERAL PURPOSE SERIES - SCORPIUS GO 420



SCORPIUS GO 420

- Cost-effective, high-quality worklamp.
- Compact design.
- Multi-voltage.
- Long-life LEDs.
- Low current draw.
- Overvoltage, over temperature, spike & polarity protected.
- Environmentally sealed cast alloy body.
- Extreme shock resistance.
- Even light pattern without hotspots.
- Deutsch DT connector encapsulated in body.
- 5 Year Warranty.

Code	Description	Operational Voltage
------	-------------	---------------------

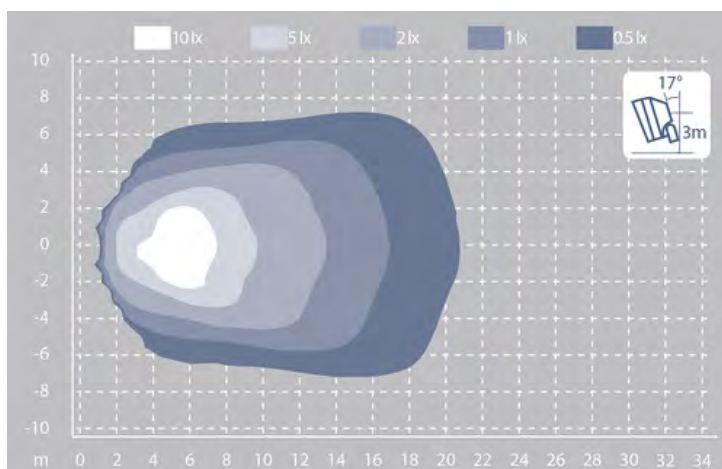
988-101	CANIS GO 410 LED - Wide Flood	9-32
---------	-------------------------------	------

988-102	CANIS GO 410 LED - Flood	9-32
---------	--------------------------	------

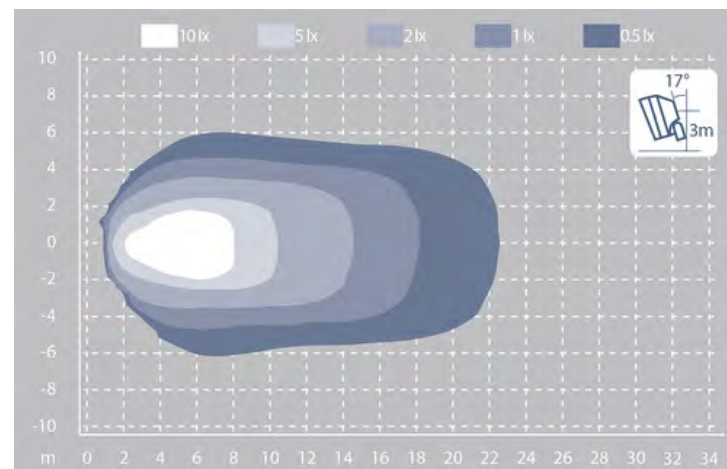
Code	Description	Operational Voltage
------	-------------	---------------------

988-203	SCORPIUS GO 420 LED - Flood	9-32
---------	-----------------------------	------

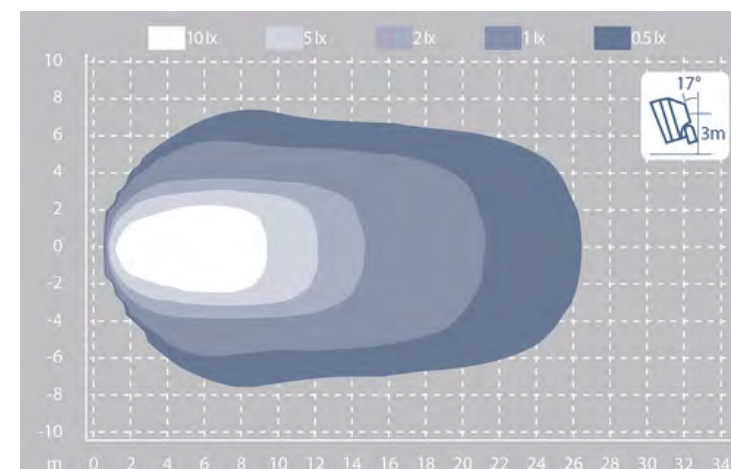
988-204	SCORPIUS GO 420 LED - Wide Flood	9-32
---------	----------------------------------	------



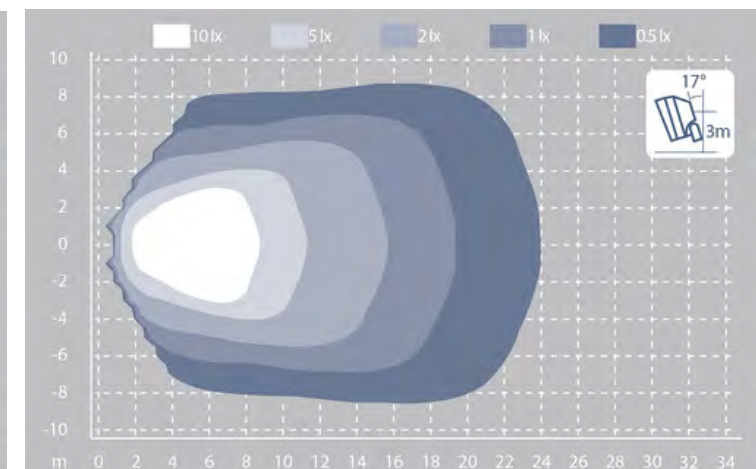
988-101



988-102



988-203



988-204

GENERAL PURPOSE SERIES - KL1401 LED



KL1401 LED

- Cost-effective, high-quality worklamp.
- Multi-voltage.
- Long-life LEDs.
- Low current draw.
- Overvoltage, over temperature, spike & polarity protected.
- Environmentally sealed cast alloy body.
- Extreme shock resistance.
- Even light pattern without hotspots.
- Deutsch DT connector encapsulated in body.
- 5 Year Warranty.

GENERAL PURPOSE SERIES - KL1901 LED



KL1901 LED

- Cost-effective, high-quality worklamp.
- Compact design.
- Multi-voltage.
- Long-life LEDs.
- Low current draw.
- Overvoltage, over temperature, spike & polarity protected.
- Environmentally sealed cast alloy body.
- Extreme shock resistance.
- Even light pattern without hotspots.
- Deutsch DT connector encapsulated in body.
- 5 Year Warranty.

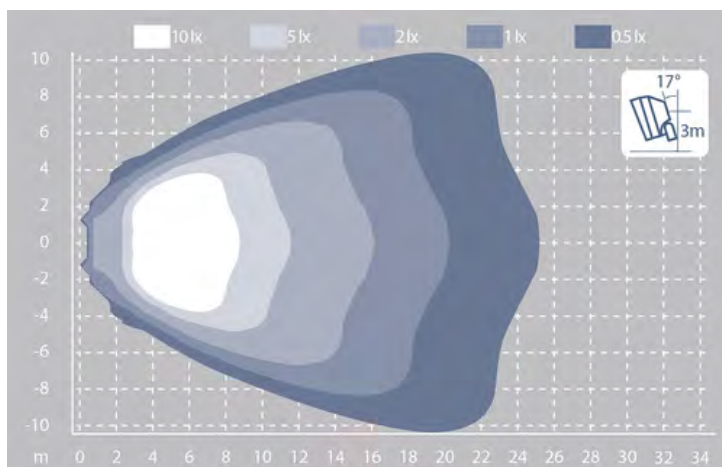
Code	Description	Operational Voltage
------	-------------	---------------------

982-803	KL1401 LED - Wide Flood	9-32
---------	-------------------------	------

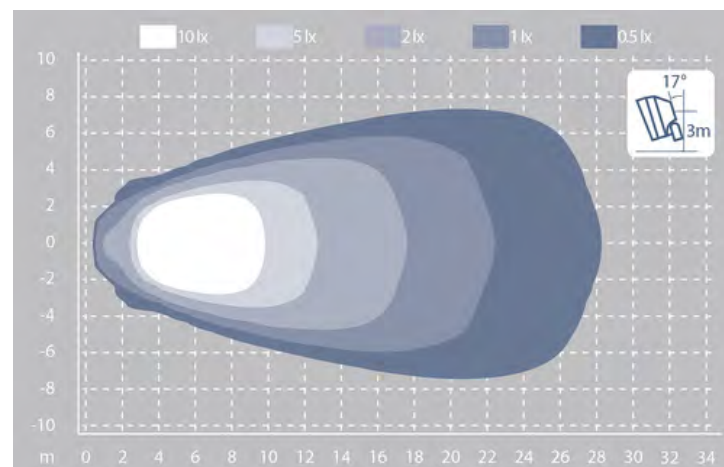
982-804	KL1401 LED - Flood	9-32
---------	--------------------	------

Code	Description	Operational Voltage
------	-------------	---------------------

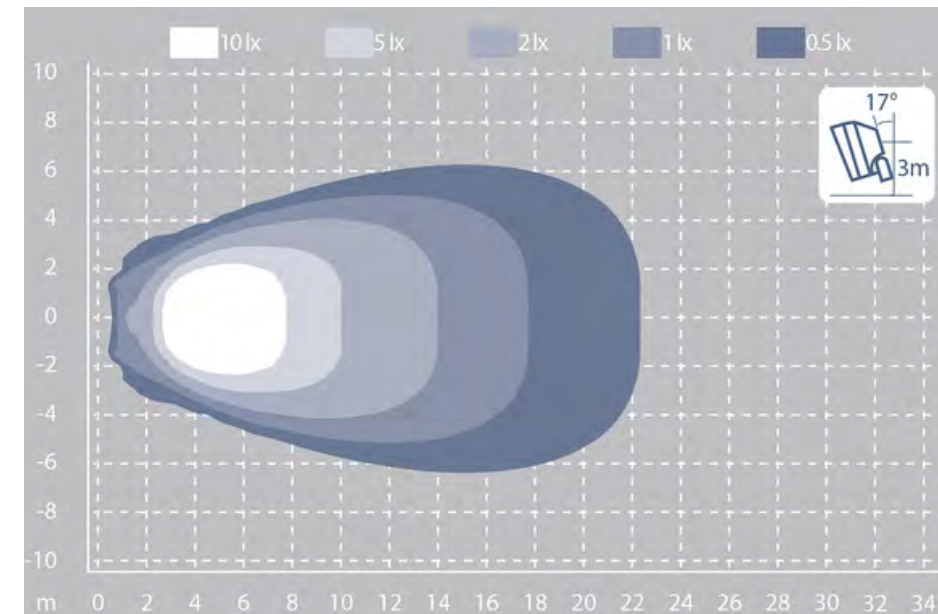
988-408	KL1901 LED - Flood	9-32
---------	--------------------	------



982-803



982-804



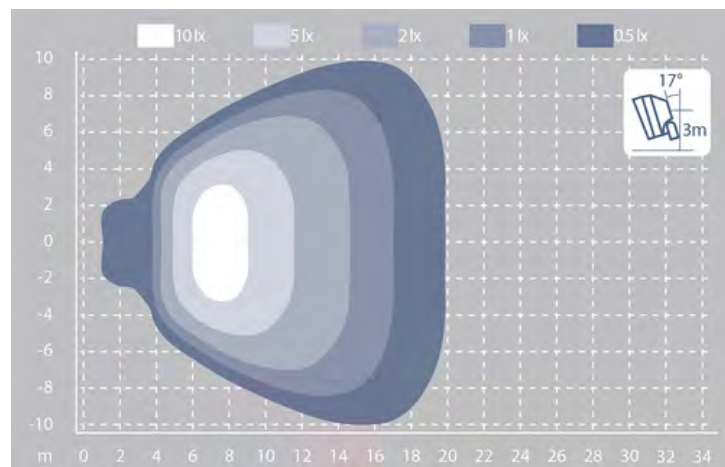
GENERAL PURPOSE SERIES - KL2001 LED



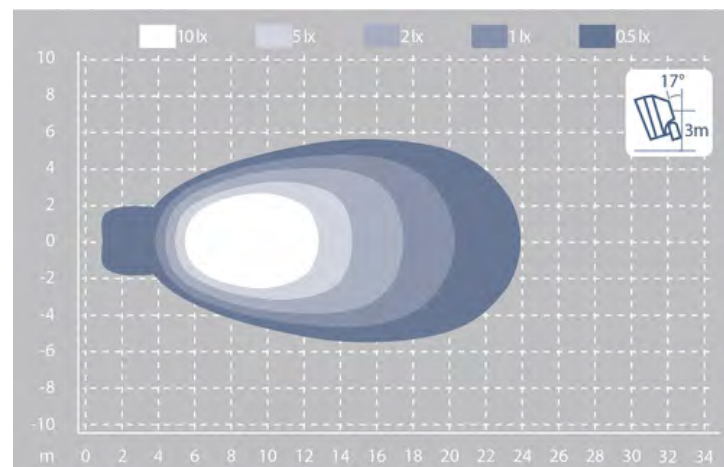
KL2001 LED

- Cost-effective, high-quality worklamp.
- Compact design.
- Multi-voltage.
- Long-life LEDs.
- Low current draw.
- Overvoltage, over temperature, spike & polarity protected.
- Environmentally sealed cast alloy body.
- Extreme shock resistance.
- Even light pattern without hotspots.
- Deutsch DT connector encapsulated in body.
- 5 Year Warranty.

Code	Description	Operational Voltage
982-608	KL2001 LED - Wide Flood	9-32
982-609	KL2001 LED - Flood	9-32



982-608



982-609



Reversing & Audible Safety



WHITE SOUND REVERSING ALARMS



BBS107

BBS-TEK FIXED VOLUME

- Unique multi-frequency white sound.
- Eliminates noise nuisance complaints.
- Sound confined to the danger zone.
- Instantly locatable sound.
- Environmentally sealed - IP68.
- Epoxy filled for maximum vibration resistance.
- Can be steam & pressure cleaned.
- Multi-voltage.
- Lifetime Warranty.



BBS97

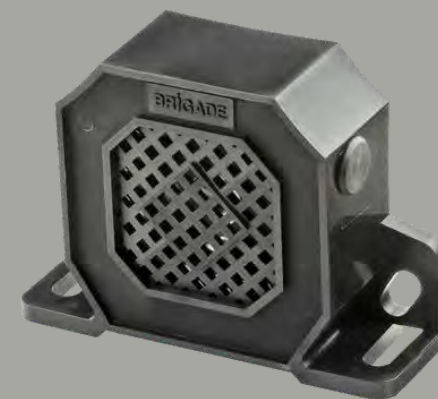
TONAL REVERSING ALARMS



SA800

TONAL SELF-ADJUSTING

- Continuously self-adjusts to 5-10dB above ambient sound pressure levels.
- Frequency optimised for construction equipment in heavy-duty models.
- Patented "Dome Speaker" technology.
- Self-cleaning port in heavy-duty models.
- Environmentally Sealed - IP68.
- Epoxy filled for maximum vibration resistance.
- Can be steam & pressure cleaned.
- Multi-voltage.
- Lifetime Warranty.



SA400

Code	SPL-dB(A)@1m	Current draw	Frequenc kHz	Voltage
BBS97	97	0.2	Multi	12-24
BBS107	107	1.0	Multi	12-24

Code	SPL-dB(A)@1m	Current draw	Frequency kHz	Speaker unit
SA400	87-102	0.2	1.25	Speaker
SA800	87-112	0.3	1.9	Dome

TONAL REVERSING ALARMS



BA890

TONAL FIXED VOLUME

- Frequency optimised for construction equipment in heavy-duty models.
- "Dome Speaker" technology.
- Self-cleaning port in heavy-duty models.
- Environmentally sealed - IP68.
- Epoxy filled for maximum vibration resistance.
- Can be steam & pressure cleaned.
- Multi-voltage
- Lifetime Warranty.



BA560

Code	SPL-dB(A)@1m	Current draw	Frequency kHz	Speaker unit
BA560	97	0.2	1.25	Speaker
BA890	112	0.5	1.9	Dome

TONAL REVERSING ALARMS



585-1

ECONOMY FIXED VOLUME

- Ideal for price-conscious applications.
- Environmentally sealed - IP67.
- 585-1 epoxy filled for maximum vibration.
- Multi-voltage.
- 2 Year Warranty.

Code	SPL-dB(A)@1m	Current draw	Frequency kHz	Voltage
585-1	97	0.1	1.3	12-80



CCTV SYSTEMS



BACKEYE 360 SELECT

- Eliminates blind spots.
- A comprehensive view of the surrounding areas in a single image.
- 360 degrees real-time video output.
- Triggered views (rear, left and right).
- On-screen distance markers on the rearview.
- Configurable viewing distance to suit different applications.
- Multiple viewing modes including portrait, front/rear focus and lane changing.
- Compatible with Brigade monitors & Mobile Digital Recorders.
- 5 Year Warranty.

We cater for a wide range of specific applications. Call us today to discuss your requirements.

Kit Includes

- 1x ECU Unit
- 4x Wide-Angle Camera
- 1x Monitor
- 1x Cable - 20m ECU to Camera
- 2x Cable - 15m ECU to Camera
- 1x Cable - 10m ECU to Camera
- 1x Adaptor - Monitor to RCA Connector
- 1x Adaptor - RCA Female to Female
- 1x IR Remote Controller
- 1x View Select Controller

OBSTACLE DETECTION



BACKSENSE RADAR

- Obstacle detection rate under 200 milliseconds.
- Adjustable max. detection distance via dip switch.
- Backscan includes in-cab visual display.
- OSD module overlays detection data for up to 2 Ultrasonic sensors on a single monitor.
- 3 stage warning zones.
- Environment Learning Mode prevents false alarms.
- Multiple sensor mount types included.
- Backscan incorporates a 50cm compensation range for inboard-mounted sensors (selectable via dip switch).
- One trigger output.
- Self-diagnostic function.
- Sensors and ECU are environmentally sealed.
- Multi-voltage.
- 3 Year Warranty.

Kit Includes

- 4x Sensor
- 1x Display
- 1x ECU
- 4x 0 Degrees Sensor Bracket
- 4x 11 Degrees Sensor Bracket
- 4x Pendant Mount Housing
- 4x Sensor Harness - 2.5m
- 1x Display Harness - 15m

Code	Description	Max combined resolution
BN-770D-200	4 Camera Kit with 7" Monitor	640 x 480

Code	Max. Detection Outer	Distance (m) Inner
BS-4000W	2.5/0.6*	2.5

*Outer sensors only, detection range adjustable via dip switch.

HORNS & BUZZERS



SY100/SY101

DISC & SCROLL HORNS

- High & low frequencies.
- Twin terminals.
- Dual mounting bracket.
- 12 or 24V models for Disc Horns.
- Heavy-duty model ideal for truck, bus & mining applications.

D2H12/D2H24/D2L12/D2L24

Code	SPL-dB(A)@1m	Voltage	Frequency	Frequency Hz
SY100	120	12	NA	395
SY101	120	24	NA	395
D2H12	110	12	High	420
D2H24	110	24	High	420
D2L12	110	12	Low	335
D2L24	110	24	Low	335

SIRENS & INTERCOMS



TC100H

SH3015

SIREN SPEAKERS

- Polycarbonate cones.
- Full cast alloy models.
- Universal or panel mount models.
- Suitable for use with all MineBase amplifiers.

Code	Watts	Impedance (0hm)	Type	Weight (kg)
TC100H	100	11	Polycarbonate	3.0
SH3015	100	5	Alloy	4.2



SIREN AMPLIFIERS

- Up to 5 tones are available.
- Horn activated tone changing on 100W models.
- Public address on most models.
- Radio re-broadcast on selected models.
- Soft start on Remote Head units.
- 12 & 24V models.

Tones

- Wail
- Hi-Low
- Air Horn
- Yelp
- Phaser

Features

- Public Address
- Radio Re-Broadcast
- Park Kill
- Horn Ring Cycler
- Manual Setting
- Soft Start Siren
- Manual Wail
- Control Pad with 8x lighting control



LED SAFETY LIGHT

- Provides visual warning for pedestrian safety.
- Ideal for forklift & other materials handling equipment.
- Multi-voltage.
- Long-life LEDs
- Low current draw.
- Polycarbonate lens for high durability.
- Environmentally sealed aluminum body.
- 5 Year Warranty.



Pedestrian Safety

The MineBase LED Safety Light is the latest innovation designed to increase pedestrian safety in areas where forklifts and other materials handling equipment maybe operating. By shining an intense focused blue light toward the ground; pedestrians will see an unmistakable warning that a vehicle is approaching even if the reversing alarm or flashing beacons are not noticed due to environmental conditions.

Code	Description	Voltage
------	-------------	---------

809-001	Siren Amplifier with Control Pad Remote Head 100 Watt	12
---------	---	----

809-002	Siren Amplifier with Control Pad Remote Head 100 Watt	24
---------	---	----

Code	Description	Colour
------	-------------	--------

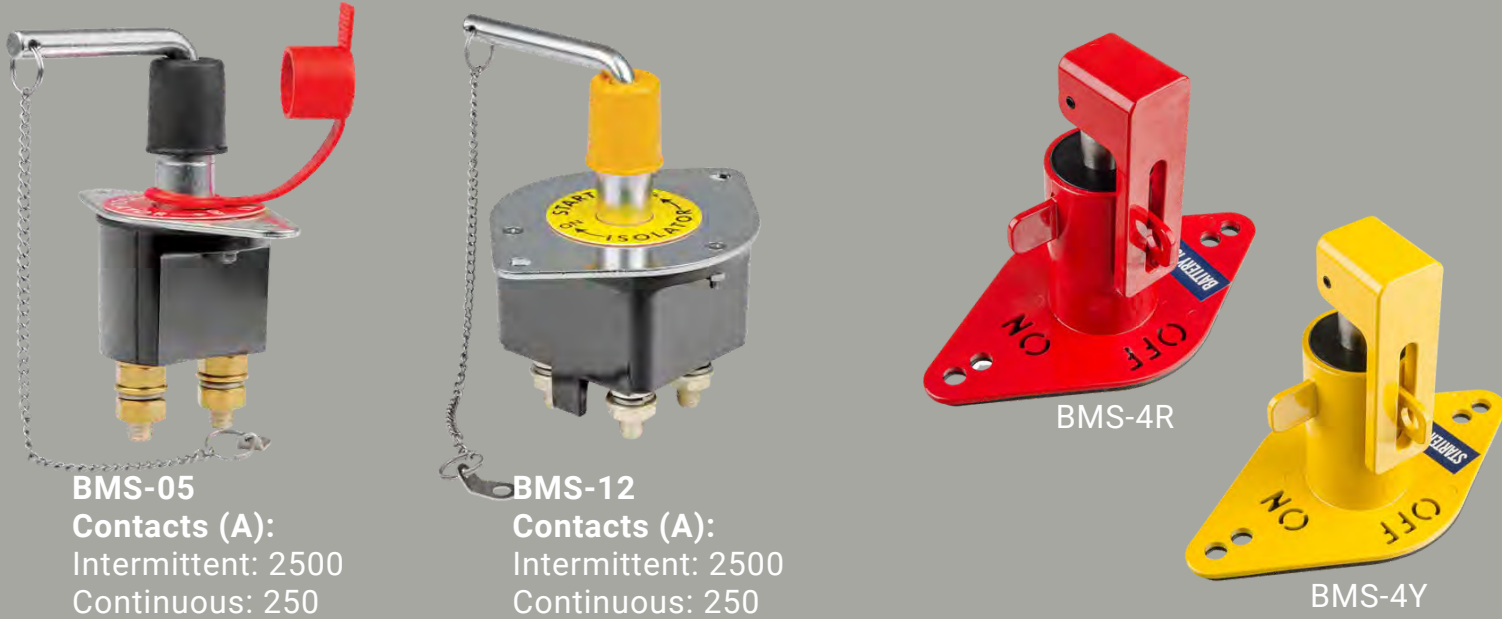
98-535B	LED Safety Light - Pedestrian Safety	Blue
---------	--------------------------------------	------

Battery Master Switches



FIXED HANDLE

L HANDLE



BMS-17
Main Contacts:
 Intermittent: 1000
 Continuous: 300
Auxiliary Contacts (A) Continuous: 20
 Fits Panel Thickness: 6.4mm

BMS-05
Contacts (A):
 Intermittent: 2500
 Continuous: 250

BMS-12
Contacts (A):
 Intermittent: 2500
 Continuous: 250

Code	Description
BMS-17	Single Pole with Auxiliary
BMS-18R	2 Piece Metal - Powder Coated Red
BMS-18Y	2 Piece Metal - Powder Coated Yellow
LS11004-01	Hinged Stainless Steel - Powder Coated Red
LS11004-02	Hinged Stainless Steel - Powder Coated Yellow

Code	Description
BMS-05	Single Pole, supplied with Starter/Battery decals
BMS-12	Double Pole, supplied with Starter/Battery decals
BMS-4R	Metal Lockout Bracket* - Powder Coated Red
BMS-4Y	Metal Lockout Bracket* - Powder Coated Yellow

*For use with a padlock

TERMINAL INSULATORS



TERMINAL INSULATORS - STRAIGHT LEADS



Code	Post Height	Cable	Cable Entry
SY2906-RED	20mm	12.5mm	Right Hand
SY2906-BLK	20mm	12.5mm	Right Hand
SY2910-RED	20mm	12.5mm	Left Hand
SY2910-BLK	20mm	12.5mm	Left Hand
SY2912-RED	25mm	17.5mm	Right Hand
SY2912-BLK	25mm	17.5mm	Right Hand
SY2914-RED	25mm	17.5mm	Left Hand
SY2914-BLK	25mm	17.5mm	Left Hand
SY2915-RED	25mm	17.5mm	Double
SY2915-BLK	25mm	17.5mm	Double

Code	Post Height	Cable	Material Thickness
SY2917-RED	19mm	12.5mm	2.3mm
SY2917-BLK	19mm	12.5mm	2.3mm
SY2919-RED	19mm	16mm	2.3mm
SY2919-BLK	19mm	16mm	2.3mm



TERMINAL INSULATORS - LUG AND RING



Code	Post Height	Diameter	Length	Inside Grip
SY2959-RED	18mm	12mm	25.5mm	12.5mm
SY2959-BLK	18mm	12mm	25.5mm	12.5mm
SY2960-RED	19mm	14mm	25.5mm	12.5mm
SY2960-BLK	19mm	14mm	25.5mm	12.5mm
SY2963-RED	20.5mm	16mm	25.5mm	12.5mm
SY2963-BLK	20.5mm	16mm	25.5mm	12.5mm
SY2965-RED	22mm	18mm	25.5mm	12.5mm
SY2965-BLK	22mm	18mm	25.5mm	12.5mm
SY2966-RED	24mm	20mm	33.5mm	18mm
SY2966-BLK	24mm	20mm	33.5mm	18mm

TERMINAL INSULATORS - LUG AND RING

Code	Post Height	Diameter	Length	Inside Grip
SY2968-RED	26.5mm	22mm	44.5mm	19mm
SY2968-BLK	26.5mm	22mm	44.5mm	19mm
SY2971-RED	32mm	26mm	52.5mm	18mm
SY2971-BLK	32mm	26mm	52.5mm	18mm
SY2970-RED	33.5mm	28mm	44.5mm	19mm
SY2970-BLK	33.5mm	28mm	44.5mm	19mm
SY2973-RED	38mm	32mm	44.5mm	23mm
SY2973-BLK	38mm	32mm	44.5mm	23mm
SY2974-RED	38mm	32mm	60.5mm	23mm
SY2974-BLK	38mm	32mm	60.5mm	23mm
SY2975-RED	38mm	32mm	44.5mm	23mm
SY2975-BLK	38mm	32mm	44.5mm	23mm



Customised Mine Signage

We now offer very high-quality safety and reflective customised Mine signage options. We are after all the experts in this area.

We can provide customised signage on adhesive backing and aluminium plates. We can even do a magnetic option! We offer all these in Class 1 and Class 2 materials.

Examples of signs we have been requested to print are:

- Area-specific call signs
- MDG15 Decals
- UHF Call up signs

Contact us today to find out more information.

DO YOUR IDENTIFICATION ASSET STICKERS NEED UPDATING?

Are your Identification Asset stickers peeling off?

Unlike the examples on the right, our stickers won't peel off.

We manufacture high UV-resistant, laminated stickers printed on Class 1 and 2 material. Mining vehicles are subject to being washed with high-pressure hoses almost every day!

A lot of lower-quality stickers can't handle this kind of force and they peel off over time.

This won't happen with our stickers.

